

deberkel®

finest professional clothing

TAKES CARE OF THOSE
WHO CARE.

Comfortable, functional, hygienic, timeless – the De Berkel® collection for care.



- + FAIRTRADE cotton raw material model
 - + Because farmers can sell larger quantities of their cotton through the Fairtrade raw material model for cotton, they are offered fairer trading conditions as well as new ways to bring about social change and greater environmental protection.
- Find out more at
www.info.fairtrade.net/sourcing



- + Lyocell fibers (TENCEL™) are made from wood.
- + Environmentally conscious manufacturing process with more than 99% recycling of process materials into the production cycle.
- + Absorbs moisture more efficiently than cotton, dry feeling.

TENCEL™ is a brand of Lenzing AG



- + The polyester of the fabric is made from recycled PET bottles.
- + Approx. 30 PET bottles are recycled for a waist jacket and approx. 28 for a pair of trousers.



MADE IN GREEN



STeP



STANDARD 100

OEKO-TEX® STANDARD 100

- + Compliance with legal requirements for textile-relevant chemicals
- + Annual re-evaluation and further development of defined limit values and criteria
- + Globally uniform and scientifically based test criteria

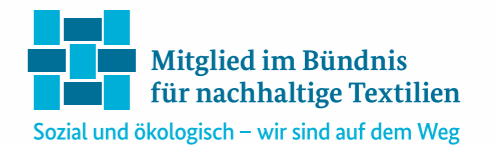
Learn more at
www.oeko-tex.com/standard-100

+ teamdress is a member of



green selection

+ our sustainable collections



CONTENTS

4 ITEM OVERVIEW

10 TUNICS

39 TROUSERS

57 SKIRTS

58 COATS

66 SIZES + MEASURES

ITEM OVERVIEW

10 FELIX
FENNA

 3457-611, 3458-611, 3457-898, 3457-284, 3457-284

13 FALCO
FIONA

 1058-029, 1057-029, 1058-690, 1057-690, 1058-284, 1057-284

14 KENT
KRISTEL

 B4618-370, B4618-804, B4618-804, B4618-873, B4618-873

17 FLORIS
FLEUR

 B4620-001, 100-0181 B, B4619-802, 208-6081 B, B4619-811, 118-6081 B, B4619-805, 508-6081 B, B4619-468, 894-6081 B

18 REMKO
RITA

 3456-641, 3456-541, 3455-541, 3456-461, 3456-897, 3456-882, 3456-780, 3455-780

20 JAIMY
JILL

 B4310 326-001, B1612 326-001, B4312 326-670, B1614 326-670, B4311 326-237, B1613 326-237, B3807 326-141, B3809 326-167, B3806 326-874, B4314 326-147, B1616 326-366, B1615 326-370

20 JAIMY
JILL

 B4315 325-B91, B1617 325-B91, B4315 325-B61, B1617 325-B61, B4315 347-B26, B4315 325-B39, B4315 326-B43, B4315 325-B34, B4315 326-B27, B4315 326-B27

23 LIVIO
LIVIA

 B3322 326-001, 100-928 227 B, B3319 326-804, 408-928 891 B, B3777 326-884, B3160 326-810, B3161 326-812, B3832 326-873, B3021 326-148

23 LIVIA

 B3104 347-641, B3888 325-343, B3104 325-016, B3104 325-855
★ TOP SELLER

24 LEX
LARA

 B4300 326-100, B1602 326-001, B4302 326-365, B1604 326-137, B3803 326-161, B3913 326-810, B4301 326-145, B1603 326-145, 108-928 303 B, B3930 326-137, B2988 326-137

24 LEX
LARA

 B4304 325-600, 009-528 909 B, B4304 325-549, B4304 325-416

26 DIRK

 1066-003, 1066-419, 1066-344, 1066-881, 1066-022

26 FRITZ

 2856 025-001



27 ABEL

 1055-001, 1055-782, 1055-898, 1055-419, 1055-344, 1055-039, 1055-022, 1055-587

ALIDA

 1056-001, 1056-782, 1056-898, 1056-419, 1056-344, 1056-039, 1056-022, 1056-587, 1056-881

ITEM OVERVIEW

28 CAMILLE
CARMEN
 B4305326-001
 B1609326-001
 B4306326-884
 B4309325-B91
 B3219325-397
 B3219326-341
 B3870326-410

30 SOLAS
SONIA
 3450-698
 3450-039
 3451-039
 3451-419
 3450-419
 3450-344
 3451-344
 3450-881
 3451-022
 3450-022
 3451-487

31 BRUNO
BIBI
 1067000-571L
 175-000890L
 1067000-570L
 1067000-577L
 1067000-561L
 195-000890L

32 DIETER
DANA
 1074000-151L
 1074000-397L
 176-000970L
 1074000-541L
 175-000970L
 1074000-181L
 181-000970L
 1074000-969L
 1074000-668L
 899-000666L

★ TOP SELLER

33 DIETER
DEBORA
 1078000-619L
 175-000970L
 1078000-378L
 181-000970L
 1078000-885L
 588-000970L

34 DETLEF
DILIA
 1073000-810L
 018-000570L
 1073000-670L
 019-000570L

35 TACO
TRIX
 B3482661-180
 B2799662B
 081-199662B
 B3482661-098
 B3482661-087

36 SELMA
 B3506347-653
36 JETTA
 B3250328-309

37 SHIRLEY
 B3747323-001
37 RINA
 B3626326-001
 B3626326-B70

38 TULA
 B4264325-317
38 PLEUN
 B3341326-489



42 CASPER
CARO
 100-000777
 7770-001
 7770-611
42 CALEB
CARISSA
 067-1690
 7773-690
42 CHRIS
CARLA
 7772-617
 7775-617
 7772-405
 7775-405

44 HEINZ
 7761-001
44 FONS
 7760-001
 7760-039
 7760-898
45 JANA
 7776-001
45 JANICE
 7907-001

46 TJITSKE
 B7110323-001
46 THEA
 B7443323-001
 B7446323-B71
46 TOOSKE
 B7071323-001
 B6117323-B82
47 THOR
 B7612323-001

ITEM OVERVIEW

47
THEO



48 HILMAR
HIDDA



58 AMBER



62 HELMUT
59 HILDA



★ TOP SELLER

49
TINY



50
ODILIA



50
HERMA



51
RENATE



51
NADINE



62 BREGT
59 BRENDA



62 DEVON
59 DOREEN



52
MILLY



52
NORA



53
ODINA



54
ODIN



54
TRUDO



60
ANNA



60 AGNES
ANNET



56
HEIKO



56
MAX



57
ODESSA



57 NENA



63 NARVIK
HAMAR



63
CARL



64
OSLO



FENNA - LADIES' TUNIC

with piqué

SIZES: 34 - 58

- + Length size 42: 70,5 cm
- + Collar, back and sleeves made from stretch fabric
- + V-neck with collar
- + Hidden snap fastener placket
- + 1/4 sleeved
- + 1 chest pocket
- + 2 side pockets with key attachment, right pocket with phone pocket
- + Side slits



3457-611
navy blue



3457-898
anthracite

3457-284
dark red

3458-284
dark red



3458-611
navy blue



3458-898
anthracite



FELIX UNISEX TUNIC

with piqué

SIZES: XS - 4XL

- + Length size L: 75,5 cm
- + Polo collar, back and sleeves made from stretch fabric
- + Hidden snap fastener placket
- + 1/4 sleeved
- + 1 chest pocket with pen holder
- + 2 side pockets with key attachment, right pocket with phone pocket
- + Side slits

MATERIAL: 67% polyester / 33% cotton
190 g/m²

TRIM: 55% cotton / 45% polyester
185 g/m², piqué

CARE:



TUNICS

TUNICS



1058-029
petrol

FIONA LADIES' SLIP-ON TUNIC

SIZES: 34 - 58

- + Length size 42: 70,5 cm
- + V-neck with snap fasteners
- + Short sleeved
- + 1 chest pocket
- + 2 side pockets
- + Side slits



1058-284
dark red



1058-690
olive



1057-284
dark red



1057-690
olive



1057-029
petrol

FALCO UNISEX SLIP-ON TUNIC

SIZES: XS - 4XL

- + Length size L: 75,5 cm
- + Round-neck
- + Short sleeved
- + 1 chest pocket
- + 2 side pockets
- + Side slits

MATERIAL: 55% cotton / 45% polyester
185 g/m², piqué

TRIM: 67% polyester / 33% cotton
190 g/m²

CARE:



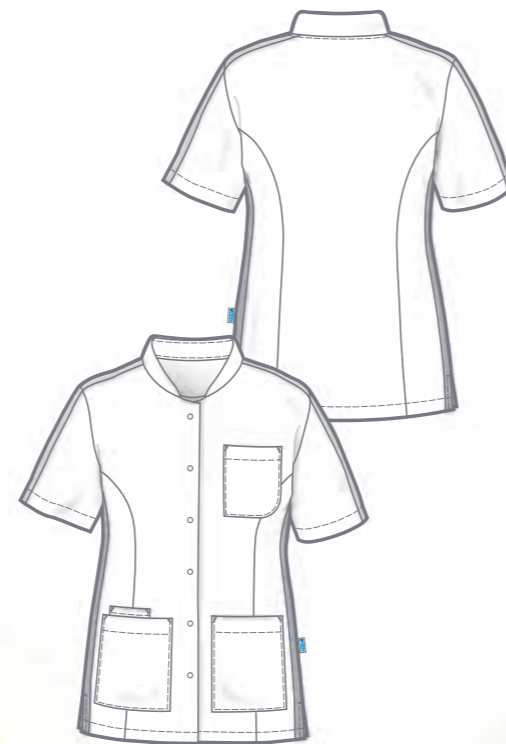
KRISTEL LADIES' TUNIC

SIZES: XS - 2XL

- + Length size L: 73,5 cm
- + Stand-up collar
- + Hidden snap fastener placket
- + Short sleeved
- + 1 chest pocket
- + 2 side pockets inside with key attachment, right with phone pocket
- + Side slits



B4618-370
white
green



B4618-804
white
navy blue



B4618-873
white
pink



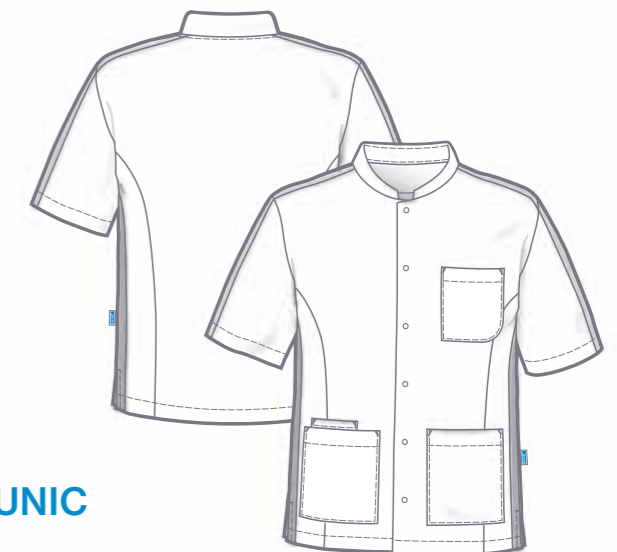
B1808-804
white
navy blue



B1808-873
white
pink



B1808-370
white
green



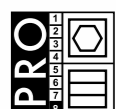
KENT UNISEX TUNIC

SIZES: XS - 2XL

- + Length size L: 76,5 cm
- + Stand-up collar
- + Hidden snap fastener placket
- + Short sleeved
- + 1 chest pocket
- + 2 side pockets inside with key attachment, right with phone pocket
- + Side slits

MATERIAL: 65% polyester
35% cotton
215 g/m²

CARE:





B4619-802
white/light blue



Flex Fit sleeves
with stretch



B1809-802
white/light blue

MATERIAL: 65% polyester
35% cotton
215 g/m²

CARE:



FLEUR LADIES' TUNIC

SIZES: XS - 2XL

- + Length size L: 74,5 cm
- + Stand-up collar
- + Hidden snap fastener placket
- + 1/4 sleeves with stretch inserts to assist with freedom of movement
- + 1 chest pocket
- + 2 side pockets inside with key attachment, right with phone pocket
- + Side slits



B4620-001
white



B4619-811
white/aqua



B4619-805
white/rose



B4619-468
light blue/navy blue



B1810-001
white



B1809-811
white/aqua



B1809-805
white/rose



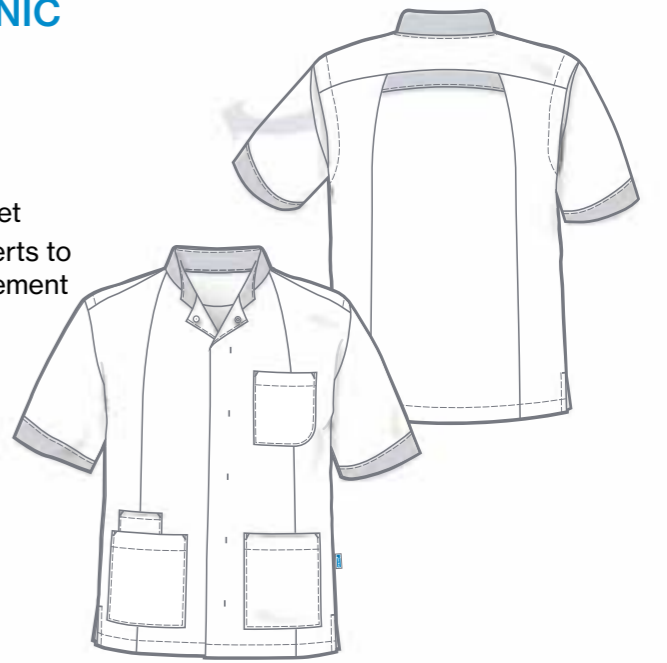
B1809-468
light blue/navy blue

FLORIS - UNISEX TUNIC

SIZES: XS - 2XL

- + Length size L: 73,5 cm
- + Stand-up collar
- + Hidden snap fastener placket
- + 1/4 sleeves with stretch inserts to assist with freedom of movement
- + 1 chest pocket
- + 2 side pockets inside with key attachment, right with phone pocket
- + Side slits

white coloured

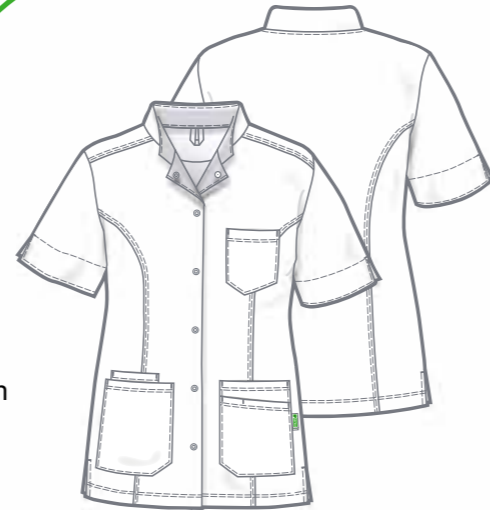


RITA LADIES' TUNIC



SIZES: 34 - 58

- + Length size 42: 71,5 cm
- + Stand-up collar
- + Snap fastener placket
- + 1/4 sleeved with slit
- + 1 chest pocket
- + 2 side pockets with key attachment, right pocket with phone pocket, left with patch pocket + pen holder
- + Side slits



3456-541
navy blue
turquoise



3456-641
turquoise
navy blue



3456-461
anise green
anthracite



3456-882
lavender
blackcurrant



3456-897
anthracite
anise green



3456-780
blackcurrant
lavender

REMKO UNISEX TUNIC



SIZES: XS - 4XL

- + Length size L: 78,5 cm
- + Stand-up collar
- + Snap fastener placket
- + 1/4 sleeved with slit
- + 1 chest pocket
- + 2 side pockets with key attachment, right pocket with phone pocket, left with patch pocket + pen holder
- + Side slits



3455-897
anthracite
anise green



3455-780
blackcurrant
lavender



3455-541
navy blue
turquoise



Feels so right

MATERIAL: 50% lyocell (Tencel™)
50% polyester
195 g/m²

CARE:





**JILL
LADIES' TUNIC**

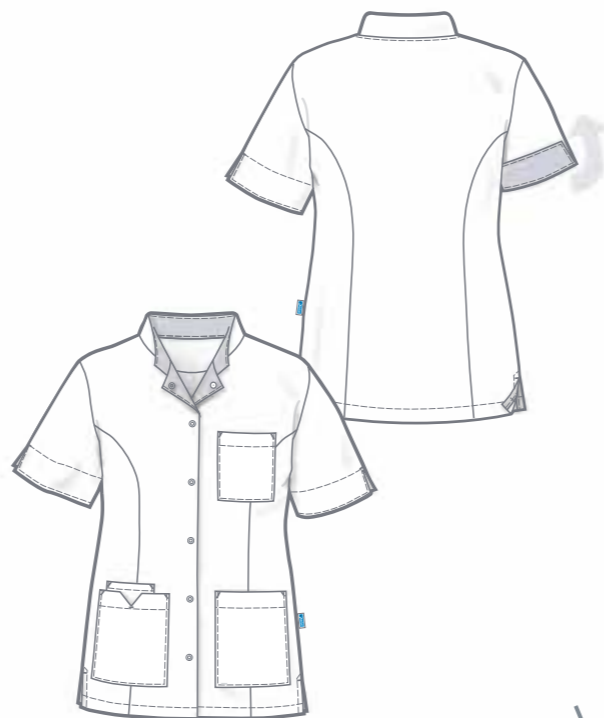
length size L: 73,5 cm

SIZES: XS - 2XL

- + Stand-up collar
- + Snap fastener placket
- + 1/4 sleeved with slit
- + 1 chest pocket
- + 2 side pockets, right with phone pocket
- + Side slits

JILL
B4312326-670
white/azure blue

★ TOP SELLER



**JILLIAN
LADIES' TUNIC**

length size L: 63,5 cm

SIZES: XS - 2XL

- + Stand-up collar
- + Snap fastener placket
- + 1/4 sleeved with slit
- + 1 chest pocket
- + 2 side pockets, right with phone pocket
- + Side slits



B3476325-B91
azure blue

B3476325-B61
blue

B3470326-001
white

JILLIAN
B3475326-670
white/azure blue



B4310326-001
white

B4311326-237
white/blue

B3807326-148
white/violet

B3809326-167
white/pink

B3806326-874
white/coral

B4314326-147
white/grey brown

B4313326-366
white/kiwi green



B4315347-B26
grey brown

B4315325-B39
kiwi green

B4315325-B91
azure blue

B4315325-B61
blue

B4315326-B43
violet

B4315325-B34
pink

B4315326-B27
coral



B1612326-001
white

B1613326-237
white/blue



JAIMY
B1614326-670
white/azure blue



B1616326-147
white/grey brown

B1615326-370
white/kiwi green



B1617325-B91
azure blue

B1617325-B61
blue



**JAIMY
UNISEX TUNIC**

SIZES: XS - 2XL

- + Length size L: 76,5 cm
- + Stand-up collar
- + Snap fastener placket
- + 1/4 sleeved
- + 1 chest pocket
- + 2 side pockets, right with phone pocket
- + Side slits

MATERIAL: 65% polyester
35% cotton
215 g/m²

CARE:



white



coloured





LIVIA LADIES' TUNIC

SIZES: XS - 2XL

- + Length size L: 73,5 cm
- + Stand-up collar
- + Snap fastener placket
- + Short sleeved with slit
- + 1 chest pocket with pen pocket
- + 1 side pocket right with phone pocket
- + 2 combined side pockets left
- + Side slits



B3319326-804
white/navy blue



★ TOP SELLER



B3322326-001
white



B3777326-884
white/turquoise



B3160326-810
white/green



B3161326-812
white/orange



B3832326-873
white/pink



B3021326-148
white/violet



B1583326-804
white/navy blue



B3104347-641
turquoise/navy blue



B3838325-343
light green/green



B3104325-016
violet/lavender



B3104325-855
lavender/violet

LIVIO UNISEX TUNIC

SIZES: XS - 2XL

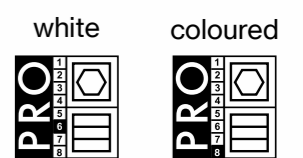
- + Length size L: 78 cm
- + Stand-up collar
- + Snap fastener placket
- + Short sleeved
- + 1 chest pocket with pen pocket
- + 1 side pocket right with phone pocket
- + 2 combined side pockets left
- + Side slits



B2772326-001
white

MATERIAL: 65% polyester
35% cotton
215 g/m²

CARE:





B4302326-365
white
dark red

LARA LADIES' TUNIC

SIZES: XS - 2XL

- + Length size L: 73,5 cm
- + Stand-up collar
- + Snap fastener placket
- + 1/4 Sleeves with stretch inserts to assist with freedom of movement
- + 1 chest pocket
- + 2 side pockets, right with phone pocket
- + Side slits



B4300326-001
white



B3803326-167
white
pink



B3913326-810
white
green



B4301326-145
white
purple



B4303326-807
white
grey



B4304325-549
light grey
dark grey



B4304325-416
purple
lavender



B4304325-600
dark red
red



LARA
B3930326-137
white
red

LEX
B2988326-137
white
red

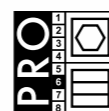
with stretch

MATERIAL: 65% polyester
35% cotton
215 g/m²

CARE:



white



coloured



B1602326-001
white



B1603326-145
white
purple



B1606325-600
dark red
red



Flex Fit sleeves
with stretch



B1604326-137
white
dark red

LEX UNISEX TUNIC

SIZES: XS - 2XL

- + Length size L: 76,5 cm
- + Stand-up collar
- + Snap fastener placket
- + 1/4 Sleeves with stretch inserts to assist with freedom of movement
- + 1 chest pocket
- + 2 side pockets, right with phone pocket
- + Side slits



DIRK - UNISEX SLIP-ON TUNIC

SIZES: XS - 4XL

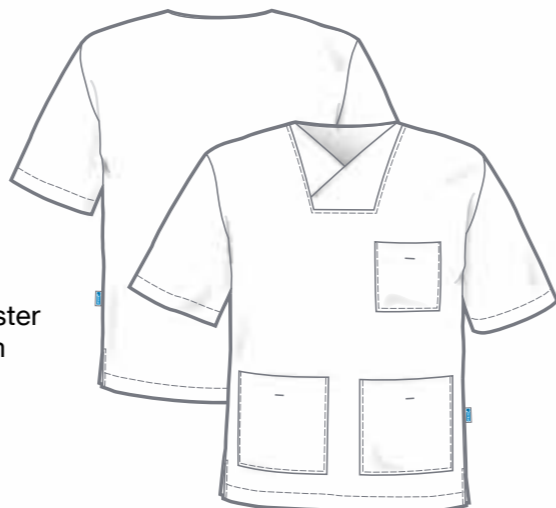
- + Length size L: 81 cm
- + V-neck
- + 1/4 sleeved
- + 1 chest pocket
- + 2 side pockets
- + Side slits

MATERIAL: 50% polyester
50% cotton
180 g/m²

CARE:



1066-419
turquoise



1066-003
light blue



1066-344
anise green



1066-881
lavender



1066-022
blackcurrant

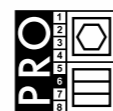
FRITZ UNISEX SLIP-ON TUNIC

SIZES: XS - 4XL

- + Length size L: 75,5 cm
- + Collar with snap fastener
- + 1/4 sleeved
- + 1 chest pocket
- + 2 side pockets
- + Side slits

MATERIAL: 65% polyester
35% cotton
215 g/m²

CARE:



2856 025-001
white



ALIDA - LADIES' SLIP-ON TUNIC

SIZES: 34 - 58

- + Length size 42: 70 cm
- + V-neck
- + 1/4 sleeved
- + 2 side pockets with key attachment, right pocket with phone pocket
- + Identity badge tab on the left
- + Side slits

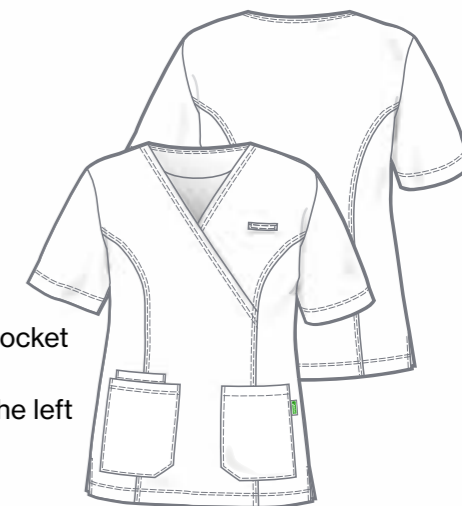
★ TOP SELLER



1056-344
anise green



1056-881
lavender



1056-001
white



1056-782
light grey



1056-898
anthracite



1056-419
turquoise



1056-039
navy blue



1056-022
blackcurrant



1056-587
red



1055-001
white



1055-782
light grey



1055-898
anthracite



1055-419
turquoise



1055-039
navy blue



1055-022
blackcurrant



1055-587
red

ABEL UNISEX SLIP-ON TUNIC

SIZES: XS - 4XL

- + Length size L: 78 cm
- + V-neck
- + 1/4 sleeved
- + 1 chest pocket
- + 2 side pockets with key attachment, right pocket with phone pocket
- + Side slits



Feels so right



1055-344
anise green

MATERIAL: 50% lyocell (Tencel™)
50% polyester
195 g/m², white 215 g/m²



CARE white tunics:



CARE coloured tunics:





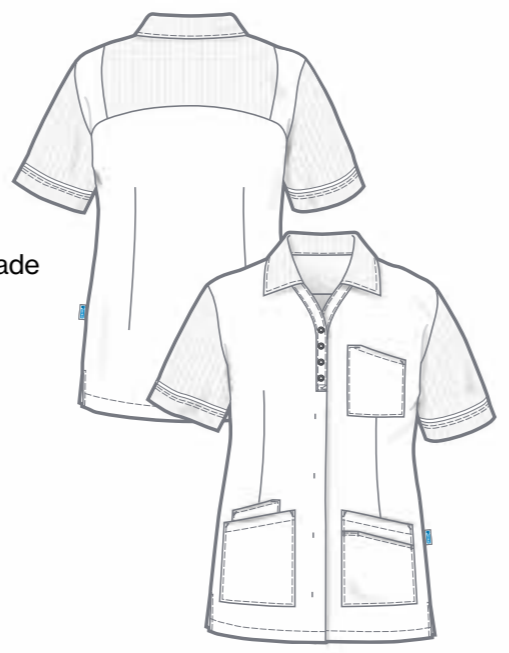
B4306326-884
white
turquoise

**CARMEN
LADIES' TUNIC**

with piqué

SIZES: XS - 2XL

- + Length size L: 73,5 cm
- + Collar, back inserts + sleeves made from stretch fabric (piqué)
- + V-neck with collar
- + Snap fastener placket, partially hidden
- + 1/4 sleeved
- + 1 chest pocket
- + 1 side pocket, right with phone pocket
- + 2 combined side pockets left
- + Side slits



B4305326-001
white



B4309325-B91
turquoise



B3219325-397
turquoise
navy blue



B3219326-341
grey
dark grey



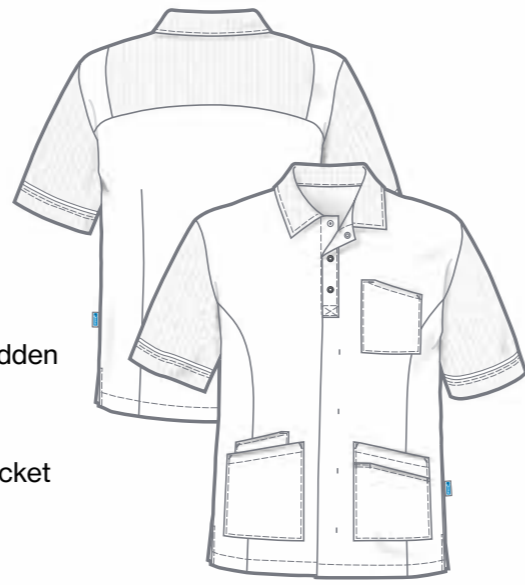
B3870326-410
schwarz
schwarz meliert

**CAMILLE
UNISEX TUNIC**

with piqué

SIZES: XS - 2XL

- + Length size L: 76,5 cm
- + Collar, back inserts + sleeves made from stretch fabric (piqué)
- + Polo collar
- + Snap fastener placket, partially hidden
- + 1/4 sleeved
- + 1 chest pocket
- + 1 side pocket, right with phone pocket
- + 2 combined side pockets left
- + Side slits



B1607326-001
white

MATERIAL: 65% polyester / 35% cotton
215 g/m²
TRIM: 55% cotton / 45% polyester
185 g/m², piqué

CARE:





3450-344
anise green

SONIA - LADIES' TUNIC

tone on tone, with piqué

SIZES: 34 - 58

- + Length size 42: 70,5 cm
- + Collar, back and sleeves made from stretch fabric
- + V-neck with collar
- + Hidden snap fastener placket
- + 1/4 sleeved
- + 1 chest pocket
- + 2 side pockets with key attachment, right pocket with phone pocket
- + Side slits



3450-698
dark grey



3450-039
navy blue



3450-419
turquoise



3450-881
lavender



3450-022
blackcurrant



3450-487
red



3451-039
navy blue



3451-419
turquoise



3451-022
blackcurrant



3451-487
red



3451-344
anise green

SOLAS - UNISEX TUNIC

tone on tone, with piqué

SIZES: XS - 4XL

- + Length size L: 75,5 cm
- + Polo collar, back and sleeves made from stretch fabric
- + Hidden snap fastener placket
- + 1/4 sleeved
- + 1 chest pocket with pen holder
- + 2 side pockets with key attachment, right pocket with phone pocket
- + Side slits



MATERIAL: 50% polyester / 50% cotton
180 g/m²

TRIM: 55% cotton / 45% polyester
185 g/m², piqué

CARE:



1067 000-571L
white/grey/turquoise



1067 000-570L
white/grey/kiwi green



1067 000-577L
white/grey/coral



1067 000-561L
white/grey/orange

BIBI LADIES' POLO TUNIC

SIZES: 34 - 58

- + Length size 42: 70,5 cm
- + V-neck with collar and snap fasteners
- + 1/4 sleeved
- + 1 chest pocket
- + 2 side pockets, right pocket with inner pocket
- + Side slits



BRUNO UNISEX SLIP-ON POLO TUNIC

SIZES: XS - 4XL

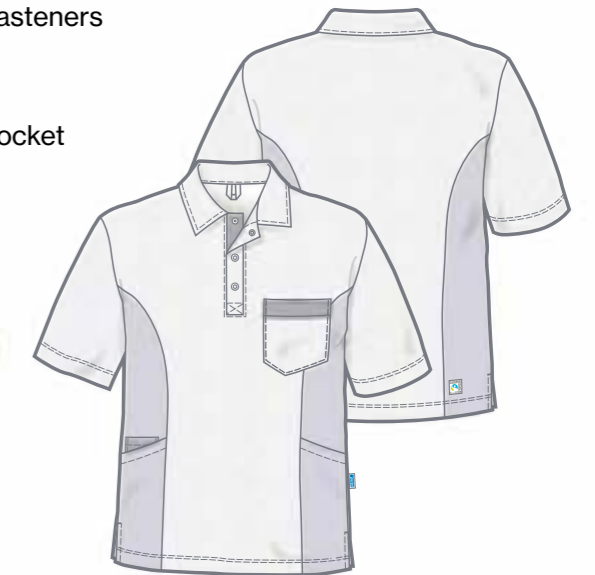
- + Length size L: 75,5 cm
- + Polo collar with snap fasteners
- + 1/4 sleeved
- + 1 chest pocket
- + 2 side pockets, right pocket with inner pocket
- + Side slits



1068 000-571
white/grey/turquoise



1067 000-561L
white/grey/orange



MATERIAL: 55% cotton / 45% polyester
185 g/m², piqué

TRIM: 65% polyester / 35% cotton
210 g/m²

CARE:





DANA LADIES' POLO TUNIC

SIZES: 34 - 58

- + Length size 42: 70,5 cm
- + V-neck with collar and snap fasteners
- + 1/4 sleeved
- + 1 chest pocket
- + 2 side pockets
- + Side slits

1074000-397L
azure blue/navy blue

★ TOP SELLER



1074000-151L
lavender/purple



1074000-541L
navy blue/turquoise



1074000-181L
navy blue/kiwi green



1074000-969L
navy blue/grey



1074000-668L
red/grey



1076000-541
navy blue/turquoise



1076000-181
navy blue/kiwi green



1076000-668
red/grey



1076000-397
azure blue/navy blue

DIETER UNISEX SLIP-ON POLO TUNIC

SIZES: XS - 4XL

- + Length size L: 75,5 cm
- + Polo collar with snap fasteners
- + 1/4 sleeved
- + 1 chest pocket
- + 2 side pockets
- + Side slits



DEBORA LADIES' POLO TUNIC

SIZES: 34 - 58

- + Length size 42: 74,5 cm
- + V-neck with cup-shaped collar and snap fasteners
- + 1/4 sleeved
- + 1 chest pocket
- + 2 side pockets
- + Side slits



1078000-885L
blackcurrant/dark magenta



1078000-619L
turquoise



1078000-378L
kiwi green



DIETER
1076000-885
blackcurrant/dark magenta



DIETER
1076000-541
navy blue/turquoise



DIETER
1076000-181
navy blue/kiwi green

MATERIAL: 55% cotton / 45% polyester
185 g/m², piqué
TRIM: 65% polyester / 35% cotton
210 g/m²

CARE:



DILIA LADIES' POLO TUNIC

SIZES: 34 - 58

- + Length size 42: 70,5 cm
- + V-neck with collar and snap fasteners
- + 1/4 sleeved
- + 2 side pockets
- + Side slits



1073000-810L
white
green



1073000-670L
white
azure blue



★ TOP SELLER

DETLEF UNISEX SLIP-ON POLO TUNIC

SIZES: XS - 4XL

- + Length size L: 75,5 cm
- + Polo collar with snap fasteners
- + 1/4 sleeved
- + 2 side pockets
- + Side slits



1075000-810
white
green



1075000-670
white
azure blue



MATERIAL: 55% cotton / 45% polyester
185 g/m², piqué

TRIM: 65% polyester / 35% cotton
210 g/m²

CARE:



TRIX LADIES' POLO TUNIC

SIZES: XS - 2XL

- + Length size L: 66,5 cm
- + V-neck with collar and snap fasteners
- + 1 attachment for identity badge left
- + 1/4 sleeved
- + 1 side pocket right + phone pocket
- + 2 combined side pockets left with pen compartment
- + Side slits



B3482661-180
turquoise
Denim



B3482661-098
pink
Denim



B3482661-087
red
Denim



TACO UNISEX SLIP-ON POLO TUNIC

SIZES: XS - 2XL

- + Length size L: 75,5 cm
- + Polo collar with snap fasteners
- + 1 attachment for identity badge left
- + 1/4 sleeved
- + 1 side pocket right + phone pocket
- + 2 combined side pockets left with pen compartment
- + Side slits



B2799661-180
turquoise
Denim



MATERIAL: 55% cotton / 45% polyester
185 g/m², piqué

TRIM: 55% cotton / 45% polyester
220 g/m²

CARE:



SELMA LADIES' TUNIC



B3506347-653
turquoise
white

SIZES: XS - 2XL

- + Length size L: 73,5 cm
- + V-neck with collar
- + Snap fastener placket, partially hidden
- + 1/4 sleeved
- + 1 chest pocket + pen pocket
- + 1 side pocket right + phone pocket
- + 2 combined side pockets left with snap fastener + pen compartment
- + Side slits

MATERIAL: 65% polyester
35% cotton
215 g/m²

CARE:



B3747323-001
white

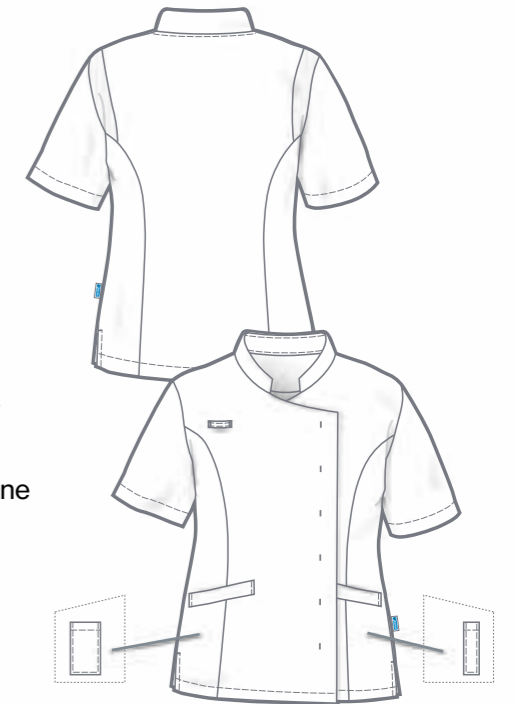
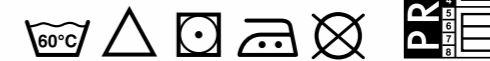
SHIRLEY LADIES' TUNIC

SIZES: XS - 2XL

- + Length size L: 63,5 cm
- + Stand-up collar
- + Back stretch insert to assist with freedom of movement
- + 1 attachment for identity badge right
- + Hidden snap fastener placket
- + 1/4 sleeved
- + 2 side pockets, right with phone pocket, left with pen pocket
- + Side slits

MATERIAL: 64% polyester
32% cotton
4% elastolefin
220 g/m²

CARE:



JETTA LADIES' TUNIC



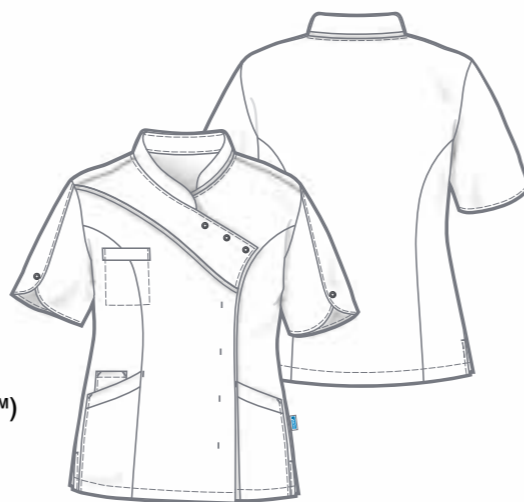
B3250328-309
schwarz
grey brown

SIZES: XS - 2XL

- + Length size L: 63,5 cm
- + Asymmetric stand-up collar
- + Snap fastener placket, partially hidden
- + 1/4 sleeved
- + 1 right chest pocket
- + 2 side pockets, right with phone pocket
- + Side slits

MATERIAL: 67% polyester
33% lyocell (Tencel™)
200 g/m²

CARE:



B3626326-001
white

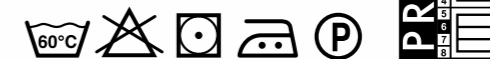
RINA LADIES' TUNIC

SIZES: XS - 2XL

- + Length size L: 63,5 cm
- + Stand-up collar
- + Back stretch insert to assist with freedom of movement
- + 1 attachment for identity badge right
- + Hidden snap fastener placket
- + 1/4 sleeved
- + 2 side pockets, right with phone pocket, left with pen pocket
- + Side slits

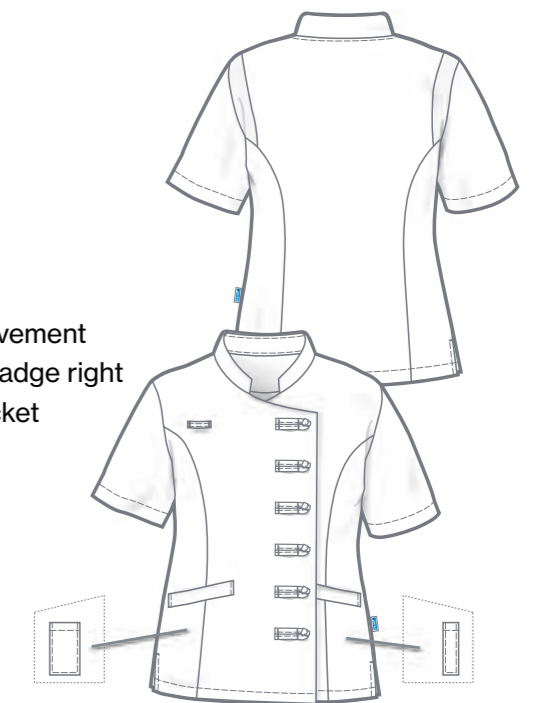
MATERIAL: 65% polyester
35% cotton
215 g/m²

CARE:



white

schwarz



B3626326-B70
schwarz





B4264325-317
pink
dark grey

TULA LADIES' TUNIC

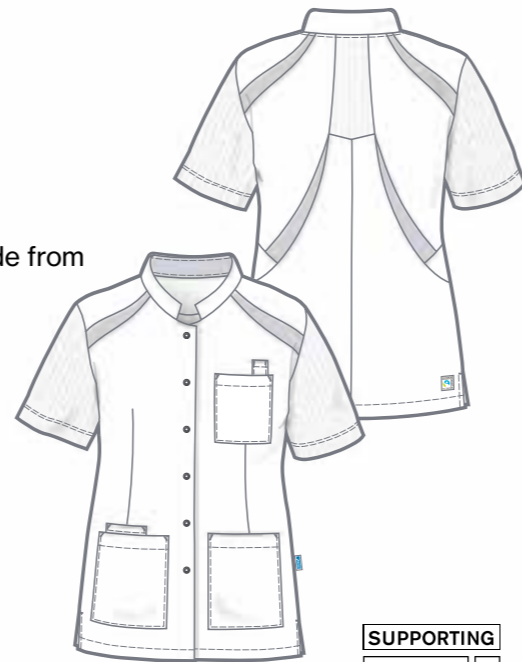
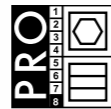
SIZES: XS - 2XL

- + Length size L: 73,8 cm
- + Sleeves + back inserts made from stretch fabric (pique)
- + Stand-up collar
- + Snap fastener placket
- + 1/4 sleeved
- + 1 left chest pocket + pen pocket
- + 2 side pockets, right with phone pocket
- + Side slits

MATERIAL: 65% polyester
35% cotton, 210 g/m²

TRIM: 55% cotton / 45% polyester
185 g/m², piqué

CARE:



B3341326-489
white
red/orange

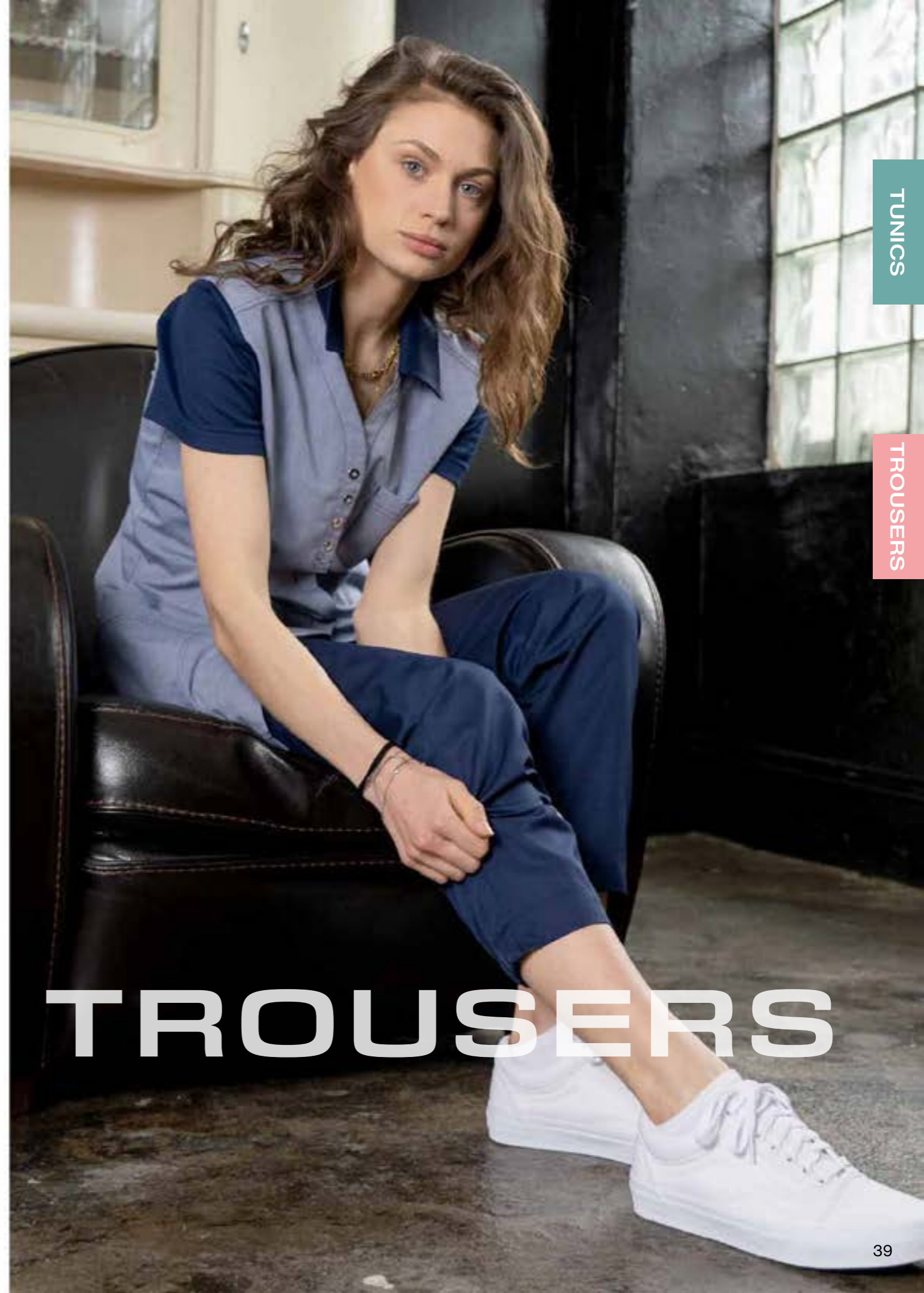
PLEUN LADIES' TUNIC

SIZES: XS - 2XL

- + Length size L: 73,5 cm
- + V-neck
- + Snap fastener placket
- + 1/4 sleeved
- + 1 left chest pocket + pen pocket
- + 2 side pockets, right with phone pocket
- + Side slits

MATERIAL: 65% polyester
35% cotton
215 g/m²

CARE:



TUNICS

TROUSERS

TROUSERS

45 JANICE **45 JANA**

LADIES

SUPER SLIM FIT

NEW **NEW**

7907-001 7776-001

46 TJITSKE **46 TOOSKE**

B7110323-001 B7071323-001 B6117323-B82

42 CASPER **42 CALEB** **42 CHRIS** **47 THOR**

MEN'S

SLIM FIT

7770-611 7770-001 7771-690 7772-617 7772-405 B7612323-001

42 CARO **42 CARISSA** **42 CARLA** **49 TINY**

LADIES

SLIM FIT

7774-001 7774-611 7773-690 7775-617 7775-405 B7051323-001

47 THEO **48 HILMAR** **56 MAX**

MEN'S

REGULAR FIT

B7405323-001 B7453323-B71 7909-001 7909-000 B7169326-001

46 THEA **48 HIDDA** **50 ODILIA** **50 HERMA**

LADIES

REGULAR FIT

B7443323-001 B7446323-B71 7908-001 7908-000 B7439326-001 7850-001

56 HEIKO

MEN'S

COMFORT FIT

2850-001

OVERVIEW OF TROUSERS BY FIT

54 TRUDO

UNISEX

REGULAR FIT

B7613326-001

53 ODINA

LADIES

COMFORT FIT

B7320326-001

51 RENATE **51 NADINE** **52 MILLY** **52 NORA** **57 ODESSA**

B7028326-001 B7259326-001 B7229326-001 B7258326-001 B7514326-001

54 ODIN **44 HEINZ** **44 FONS**

UNISEX

COMFORT FIT

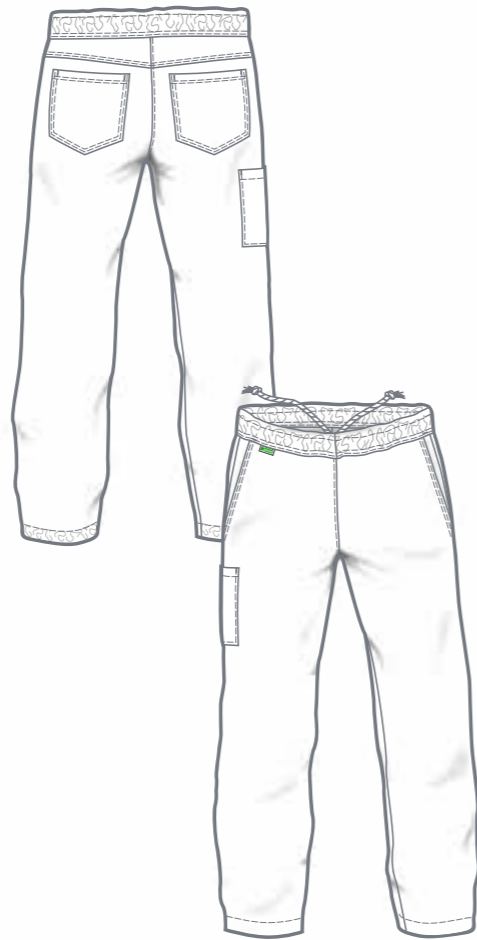
B7106326-001 7761-001 7760-001 7760-039 7760-898

**CARO + CARISSA + CARLA
LADIES' SLIP-ON TROUSERS**

**CASPER + CALEB + CHRIS
MEN'S SLIP-ON TROUSERS**

SIZES: XS - 3XL
 XS-L - XL-L (length + 4 cm)
 XS-K - 2XL-K (length - 5 cm)

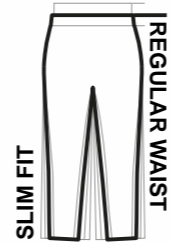
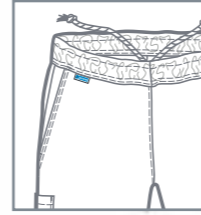
- + Elasticated waistband with cord (internal)
- + 2 side pockets
- + 2 hip pockets
- + 1 right cargo pocket
- + Inner side tabs
- + Elasticated back of leg hems



CARISSA + CALEB



CARLA + CHRIS

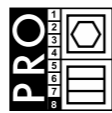


CARISSA 7773-690
 CALEB 7771-690
 olive

MATERIAL: 65% polyester
 olive
 35% cotton
 210 g/m²



CARE:



CARO 7774-001
 CASPER 7770-001
 white



CARO 7774-611
 CASPER 7770-611
 navy blue

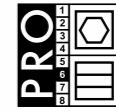


MATERIAL: 65% polyester (recPET)
 white 35% lyocell (TENCEL™)
 navy blue 190 g/m²

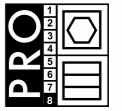
CARE:



white



navy blue



CARLA 7775-617
 CHRIS 7772-617
 black Denim



CARLA 7775-405
 CHRIS 7772-405
 navy blue Denim

MATERIAL: 67% polyester
 Denim
 33% cotton
 190 g/m²

CARE:





Tencel™

Feels so right

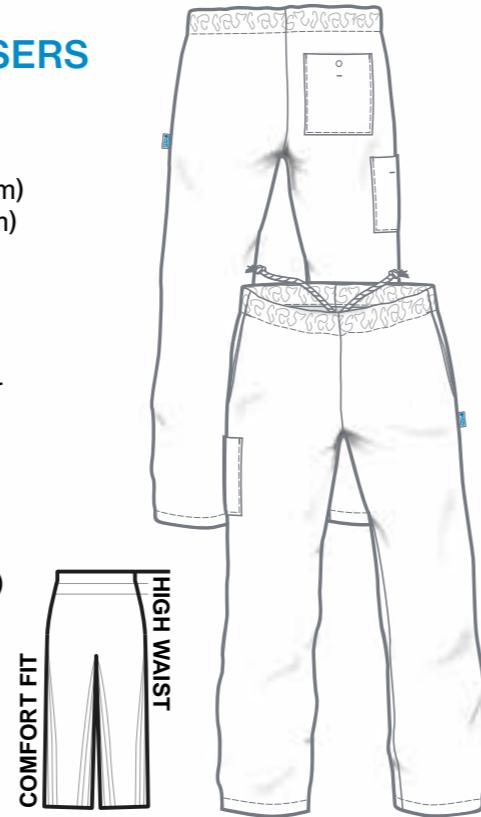
HEINZ
7761-001
white

HEINZ UNISEX SLIP-ON TROUSERS in 3 lengths

SIZES: XS - 3XL
XS-L - XL-L (length + 4 cm)
XS-K - 2XL-K (length - 5 cm)

- + Elasticated waistband with cord (internal)
- + 2 side pockets
- + 1 back pocket with snap fastener
- + 1 thigh pocket right
- + Inner side tabs

MATERIAL: 65% polyester
35% lyocell (TENCEL™)
215 g/m²



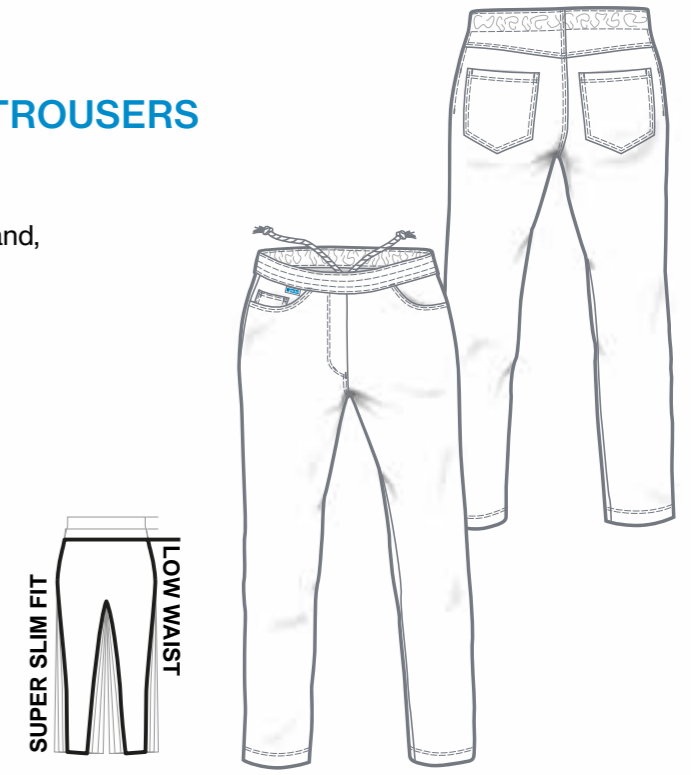
JANA
7776-001
white

JANA LADIES' SLIP-ON TROUSERS

SIZES: 34 - 52

- + Elasticated back waistband, in front with drawstring
- + Decorative fly
- + 2 side pockets
- + 1 coin pocket
- + 2 hip pockets

MATERIAL: 64% cotton
33% polyester
3% Elastan
300 g/m²



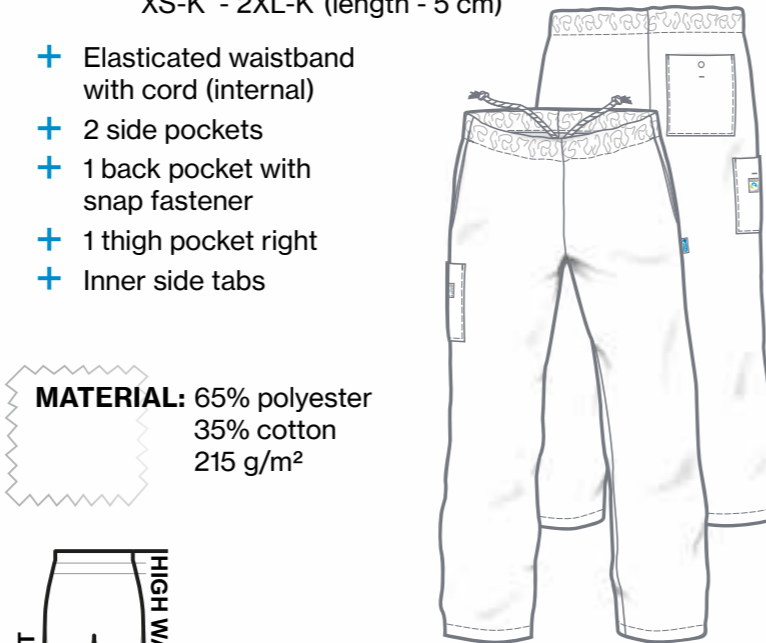
FONS 7760-001 white
FONS 7760-039 navy blue
FONS 7760-898 anthracite

FONS UNISEX SLIP-ON TROUSERS in 3 lengths

SIZES: XS - 3XL
XS-L - XL-L (length + 4 cm)
XS-K - 2XL-K (length - 5 cm)

- + Elasticated waistband with cord (internal)
- + 2 side pockets
- + 1 back pocket with snap fastener
- + 1 thigh pocket right
- + Inner side tabs

MATERIAL: 65% polyester
35% cotton
215 g/m²



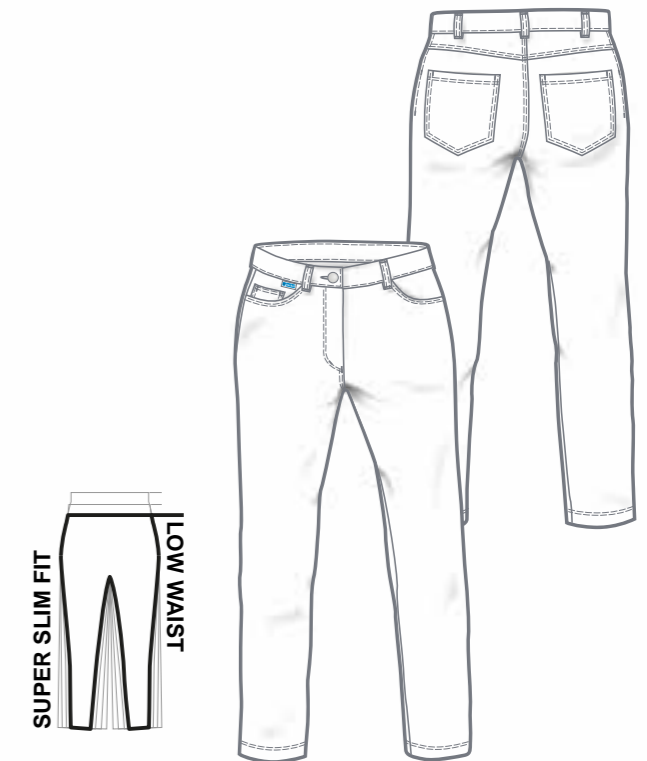
JANICE
7907-001
white

JANICE LADIES' TROUSERS

SIZES: 34 - 52

- + 5 belt loops
- + Waistband fastener with jeans button
- + Zip fly
- + 2 side pockets
- + 1 coin pocket
- + 2 hip pockets

MATERIAL: 64% cotton
33% polyester
3% Elastan
300 g/m²



CARE white:



CARE coloured:



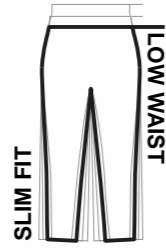
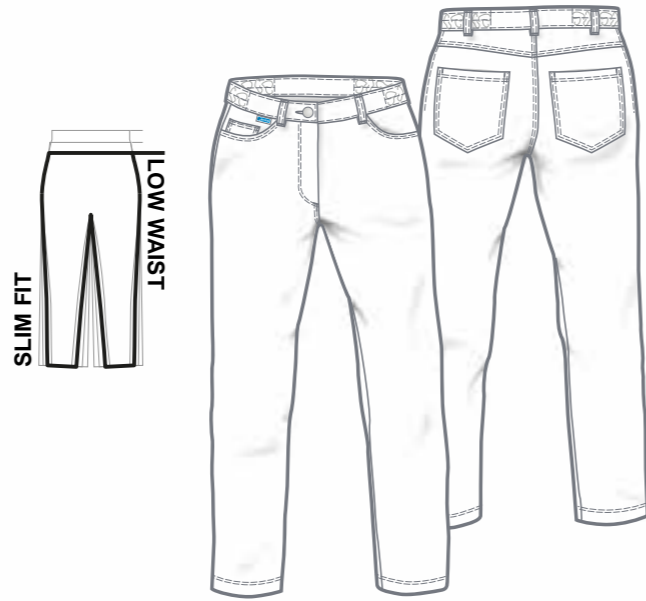
CARE:



LADIES' TROUSERS
TJITSKE without leg pocket

SIZES: 34 - 52

- + 5 belt loops
- + Waistband fastener with jeans button
- + Zip fly
- + Elasticated side waistband
- + 2 side pockets, right with coin pocket
- + 2 hip pockets



TJITSKE
B7110323-001
white

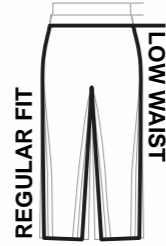
★ TOP SELLER



THEA
B7443323-001
white



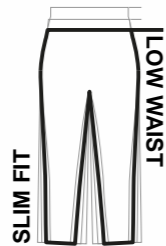
THEA
B7446323-B71
black



LADIES' TROUSERS
THEA + TOOSKE with leg pocket
TOOSKE without leg pocket

SIZES: 34 - 52

- + 5 belt loops
- + Waistband fastener with jeans button
- + Zip fly
- + Elasticated side waistband
- + 2 side pockets, right with coin pocket
- + 2 hip pockets



TOOSKE
B7071323-001
white



TOOSKE
B6117323-B82
navy blue

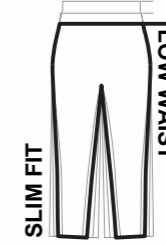
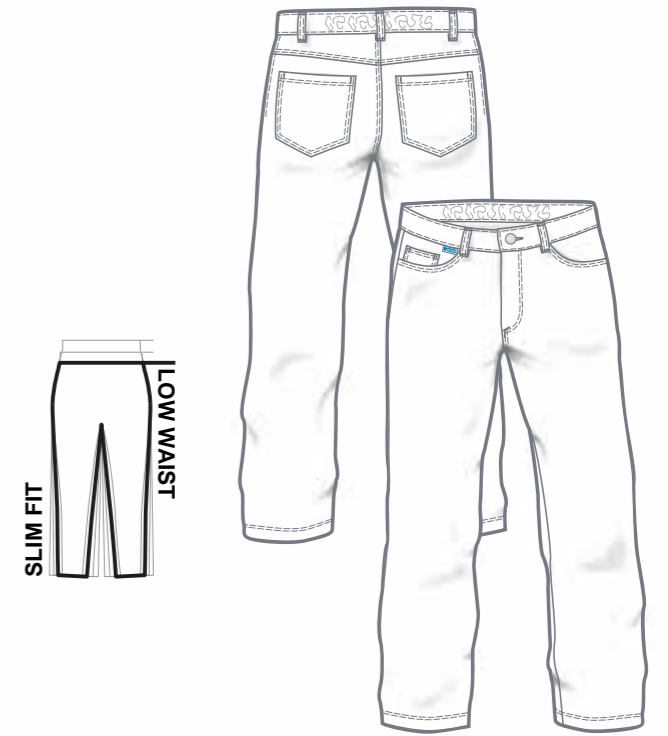


THOR
B7612323-001
white

MEN'S TROUSERS
THOR without leg pocket

SIZES: 44 - 60

- + 5 belt loops
- + Waistband fastener with jeans button
- + Elasticated back waistband
- + Zip fly
- + 2 side pockets, right with coin pocket
- + 2 hip pockets



MEN'S TROUSERS
THEO with leg pocket

SIZES: 44 - 60

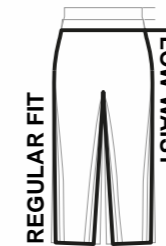
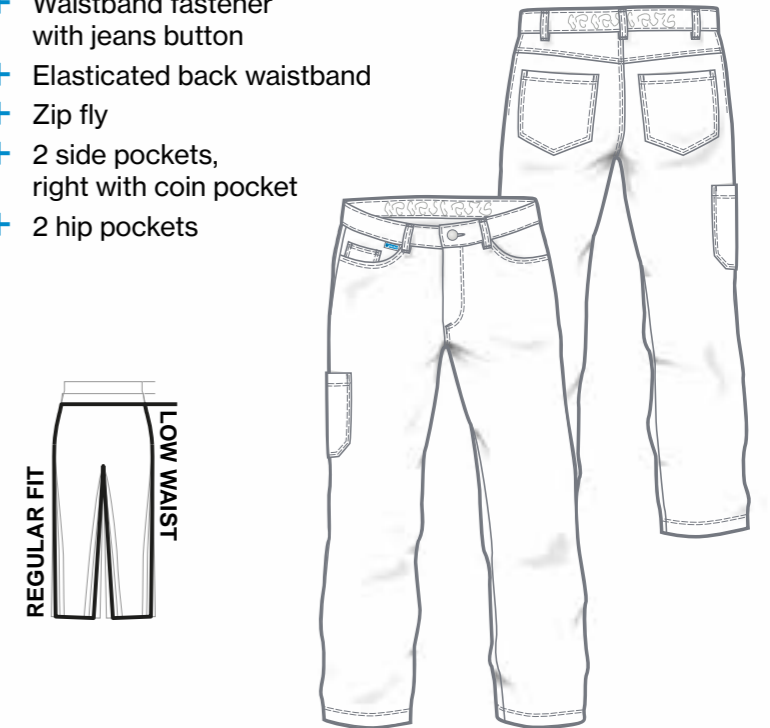
- + 5 belt loops
- + Waistband fastener with jeans button
- + Elasticated back waistband
- + Zip fly
- + 2 side pockets, right with coin pocket
- + 2 hip pockets



THEO
B7405323-001
white



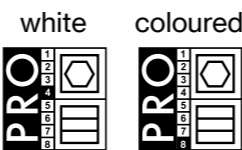
THEO
B7453323-B71
black



★ TOP SELLER

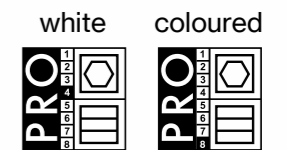
MATERIAL: 64% polyester
32% cotton
4% elastolefin
220 g/m², black 205 g/m²

CARE:



MATERIAL: 64% polyester
32% cotton
4% elastolefin
220 g/m², black 205 g/m²

CARE:





7908-000
black



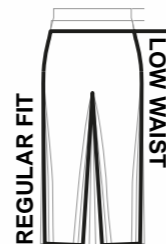
7908-001
white

HIDDA LADIES' TROUSERS

in 3 lengths

SIZES: 34 - 56
72 - 88
18 - 25

- + Straight cut
- + Hip height
- + Elasticated adjustable back waistband
- + 7 belt loops
- + Zip fly
- + 2 side pockets
- + 1 coin pocket
- + 2 back pockets



REGULAR FIT
LOW WAIST



★ TOP SELLER



7909-000
black



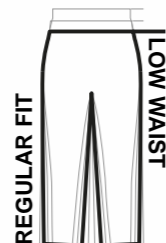
7909-001
white

HILMAR MEN'S TROUSERS

in 3 lengths

SIZES: 44 - 66
90 - 114
23 - 30

- + 7 belt loops
- + Waistband with jeans button
- + Zip fly
- + 2 side pockets
- + 1 coin pocket
- + 2 back pockets



REGULAR FIT
LOW WAIST



MATERIAL: 60% polyester
35% cotton
5% elastolefin
240 g/m²

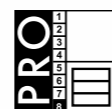
CARE:



white



coloured



SLIM FIT
LOW WAIST

TINY
B7051323-001
white

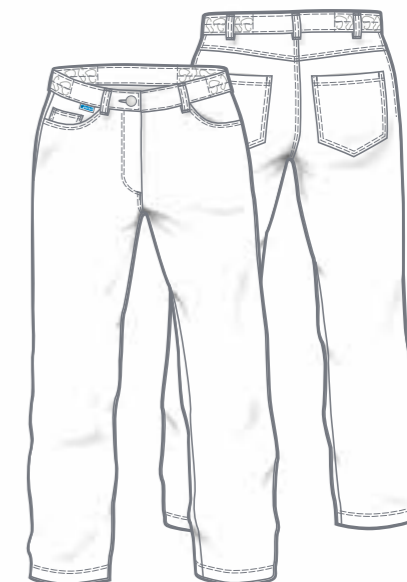
TINY LADIES' TROUSERS

SIZES: 34 - 52

- + 5 belt loops
- + Waistband fastener with jeans button
- + Zip fly
- + Elasticated side waistband
- + 2 side pockets, right with coin pocket
- + 2 hip pockets

MATERIAL: 64% polyester
32% cotton
4% elastolefin
220 g/m²

CARE:





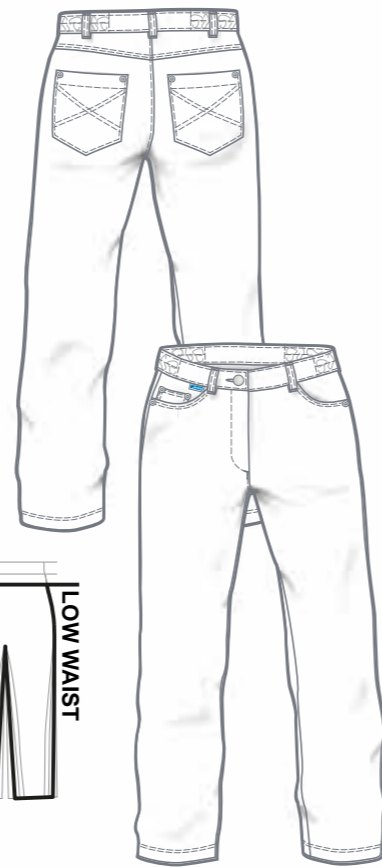
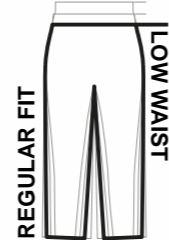
ODILIA LADIES' TROUSERS

SIZES: 34 - 52

- + 5 belt loops
- + Waistband fastener with jeans button
- + Zip fly
- + Elasticated side waistband
- + 2 side pockets, right with coin pocket
- + 2 hip pockets

MATERIAL: 65% polyester
35% cotton
215 g/m²

CARE:



B7439326-001
white



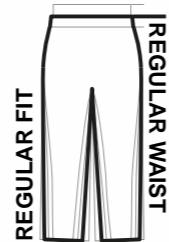
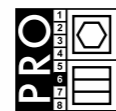
HERMA LADIES' TROUSERS

SIZES: 34 - 60

- + Waistband with jeans button
- + 7 belt loops
- + Elasticated adjustable back waistband
- + Zip fly
- + 2 pleats
- + 2 side pockets

MATERIAL: 65% polyester
35% cotton
215 g/m²

CARE:



7850-001
white



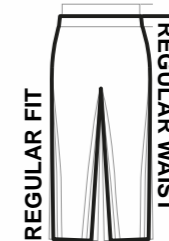
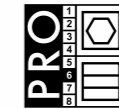
RENAME LADIES' TROUSERS

SIZES: 34 - 52

- + 6 belt loops
- + Waistband with 2 jeans buttons
- + Elasticated back waistband
- + Zip fly
- + 2 side pockets
- + 2 hip pockets, right with tab and jeans button

MATERIAL: 65% polyester
35% cotton
215 g/m²

CARE:



B7028326-001
white



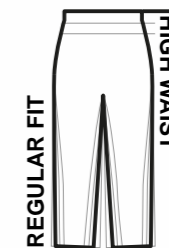
NADINE LADIES' TROUSERS

SIZES: 34 - 52

- + 5 belt loops
- + Waistband with jeans button
- + Zip fly
- + Elasticated side waistband
- + 2 side pockets
- + 2 hip pockets
- + 1 cargo pocket (phone) left

MATERIAL: 65% polyester
35% cotton
215 g/m²

CARE:



B7259326-001
white



B7229326-001
white

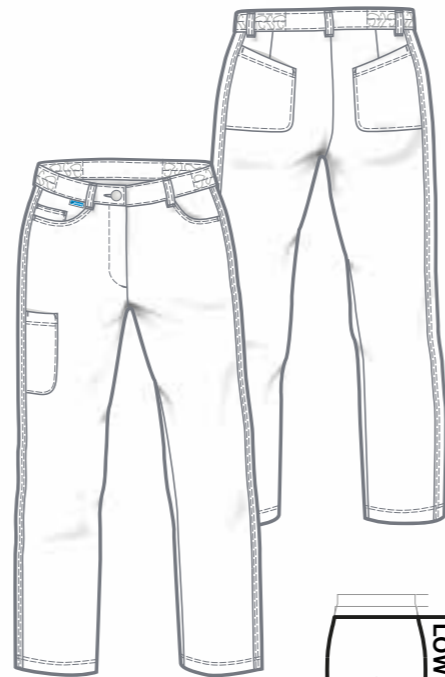
MILLY LADIES' TROUSERS

SIZES: 34 - 52

- + 5 belt loops
- + Waistband fastener with jeans button
- + Zip fly
- + Elasticated side waistband
- + 2 side pockets, right with coin pocket
- + 2 hip pockets
- + 1 cargo pocket (phone) right

MATERIAL: 65% polyester
35% cotton
215 g/m²

CARE:



REGULAR FIT
LOW WAIST



B7320326-001
white

ODINA LADIES' TROUSERS

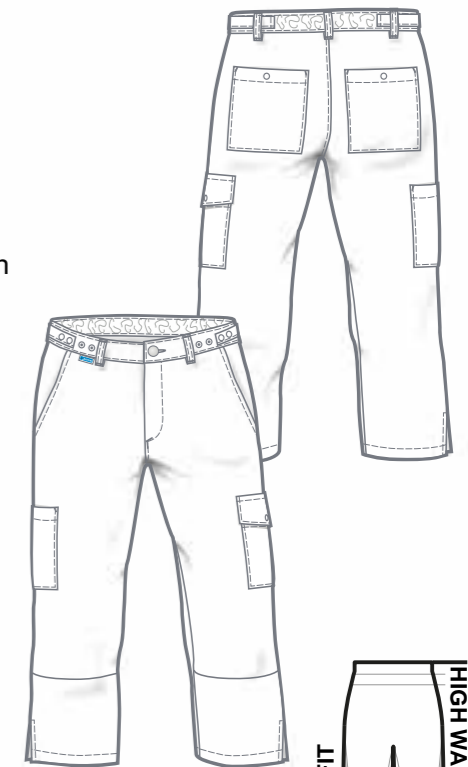
7/8 length

SIZES: 2XS - 3XL

- + 5 belt loops
- + Waistband fastener with jeans button
- + Elasticated back waistband
- + Side tabs with snap fasteners
- + Button fly
- + 2 side pockets
- + 2 hip pockets with snap fastener
- + 2 cargo pockets, left with flap and snap fastener
- + Leg hems with slit

MATERIAL: 65% polyester
35% cotton
215 g/m²

CARE:



COMFORT FIT
HIGH WAIST



B7258326-001
white

NORA LADIES' TROUSERS

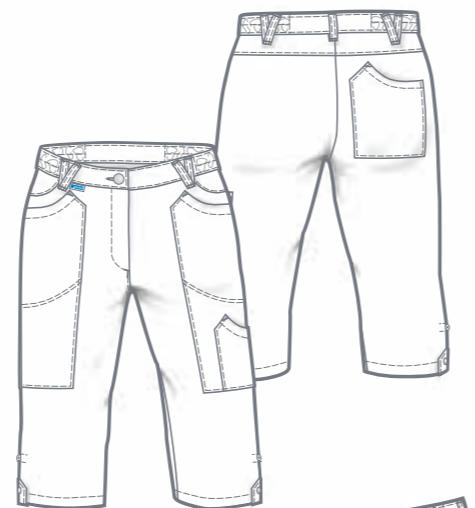
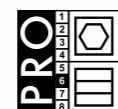
3/4 length

SIZES: 34 - 52

- + 5 belt loops
- + Elasticated side waistband
- + Waistband with jeans button
- + Zip fly
- + 2 side pockets
- + 1 right hip pocket
- + 1 left cargo pocket (phone)
- + Legs to roll up with tab and snap fastener

MATERIAL: 65% polyester
35% cotton
215 g/m²

CARE:



REGULAR FIT
LOW WAIST





B7106326-001
white

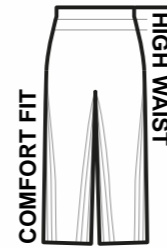
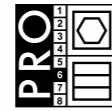
ODIN UNISEX TROUSERS

SIZES: 2XS - 3XL

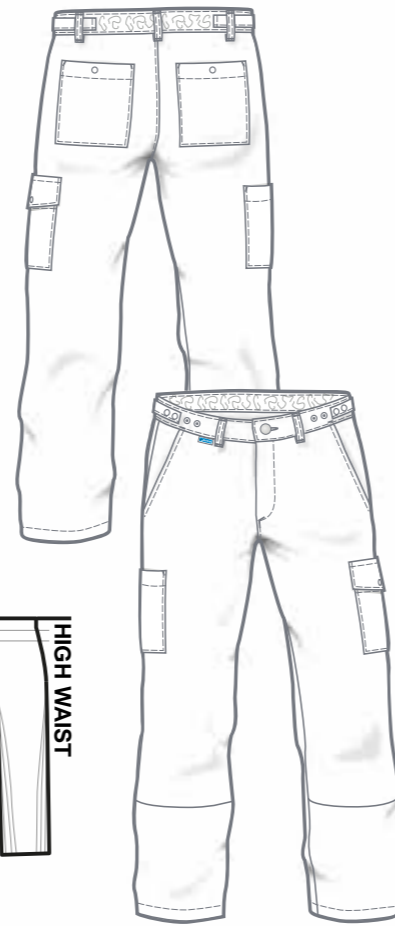
- + 5 belt loops
- + Waistband fastener with jeans button
- + Elasticated back waistband
- + Side tabs with snap fasteners
- + Button fly
- + 2 side pockets
- + 2 hip pockets with snap fastener
- + 2 cargo pockets, left with flap and snap fastener

MATERIAL: 65% polyester
35% cotton
215 g/m²

CARE:



COMFORT FIT



B7613326-001
white

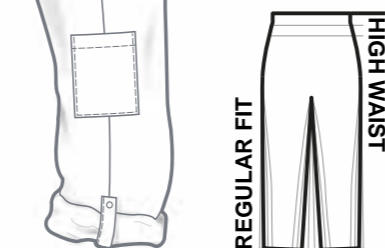
TRUDO UNISEX TROUSERS

SIZES: 2XS - 3XL

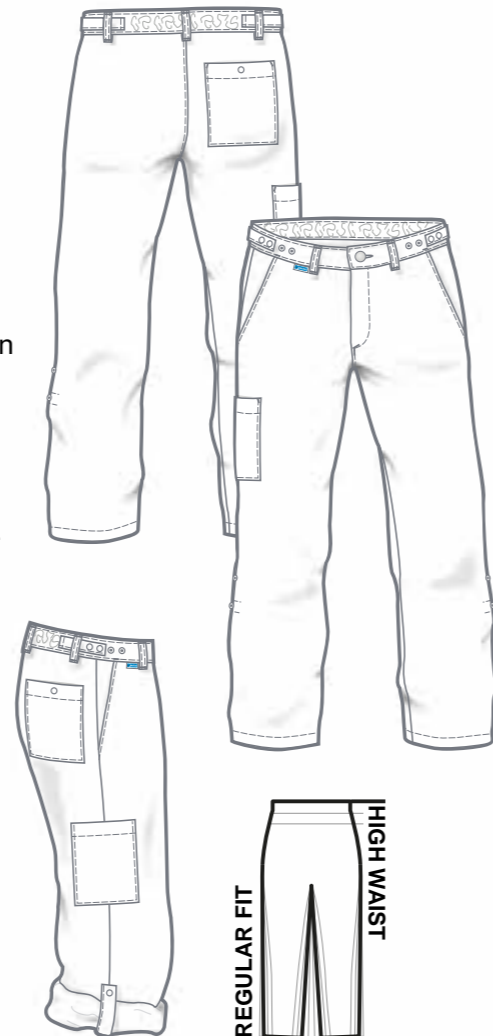
- + 5 belt loops
- + Waistband fastener with jeans button
- + Elasticated back waistband
- + Side tabs with snap fasteners
- + Button fly
- + 2 side pockets
- + 1 right hip pocket with snap fastener
- + 1 right cargo pocket (phone)
- + Legs to roll up with tab and snap fastener

MATERIAL: 65% polyester
35% cotton
215 g/m²

CARE:



REGULAR FIT





2850-001
white

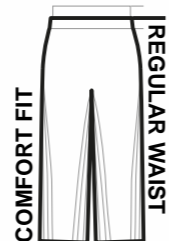
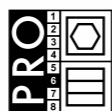
HEIKO MEN'S TROUSERS

SIZES: 42 - 66
90 - 114
23 - 30

- + 7 belt loops
- + Extended waistband fastener with 2 snap fasteners
- + Zip fly
- + 2 pleats
- + Stitched creases
- + 2 side pockets
- + 1 set-in back pocket with flap and snap fastener

MATERIAL: 65% polyester
35% cotton, 215 g/m²

CARE:



B7169326-001
white

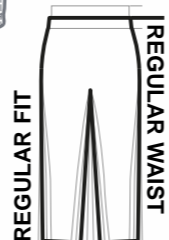
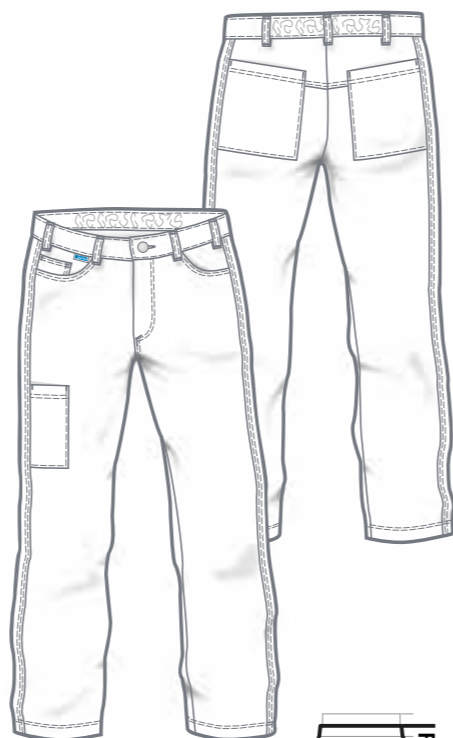
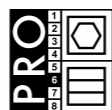
MAX MEN'S TROUSERS

SIZES: 44 - 64

- + 7 belt loops
- + Elasticated back waistband
- + Zip fly
- + 2 side pockets, right with coin pocket
- + 2 hip pockets
- + 1 cargo pocket (phone) right

MATERIAL: 65% polyester
35% cotton, 215 g/m²

CARE:



B7514326-001
white

ODESSA TROUSERS FOR PREGNANCY

with stretch

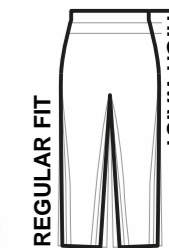
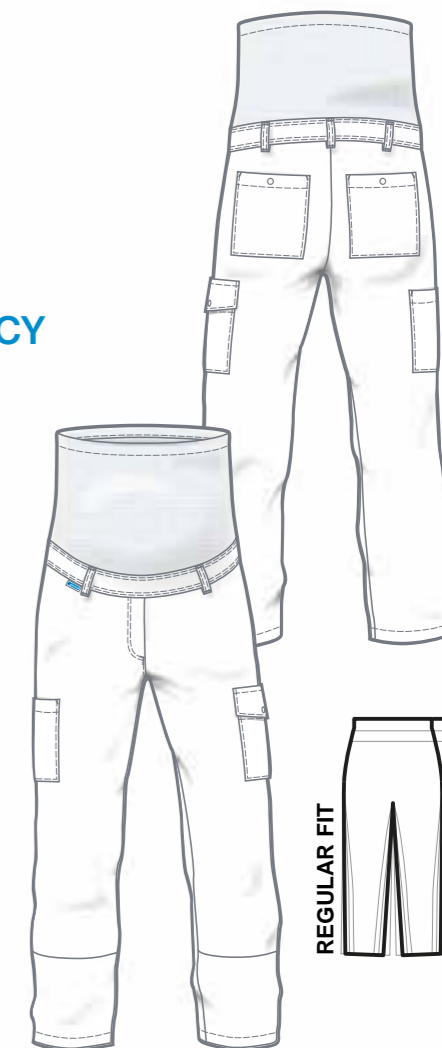
SIZES: 34 - 52

- + 5 belt loops
- + 2 hip pockets with snap fastener
- + 2 cargo pockets, left with flap and snap fastener

MATERIAL: 65% polyester
35% cotton, 215 g/m²

STRETCH: 100% polyester, 270 g/m²

CARE:



NENA
B5052326-001
white

NENA - SKIRT

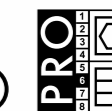
length: 55 cm (size 38)

SIZES: 34 - 52

- + Waistband fastener at the back with jeans button
- + Zip fly
- + Elasticated side waistband
- + 2 side pockets, right with coin pocket
- + 2 combined pockets right
- + 1 pocket left with flap and snap fastener + pen holder
- + Back slit

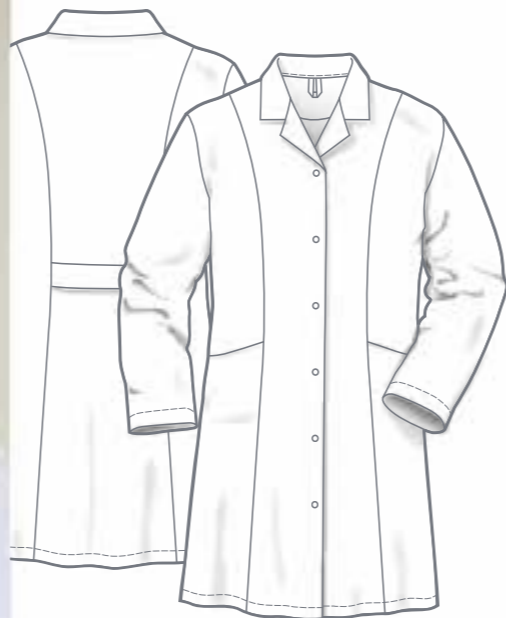
MATERIAL: 65% polyester
35% cotton, 215 g/m²

CARE:





COATS



AMBER 2559 100-001
white

AMBER - LADIES' COAT

SIZES: 34 - 58

- + Length size 42: 105 cm
- + Lapel collar
- + Snap fastener placket
- + 2 side pockets
- + Half back belt

MATERIAL: 65% polyester
35% cotton
215 g/m²



HILDA 4361-001
white

HILDA + BRENDA

- + Length size 42: 105,5 cm

MATERIAL: 65% polyester
35% cotton
215 g/m²



BRENDA 4364-001
DOREEN 4366-001
white

LADIES' COAT HILDA

with stand-up collar
and back belt

BRENDA + DOREEN

with lapel collar

SIZES: 34 - 58

- + Hidden snap fastener placket
- + 1 chest pocket
- + 2 side pockets
- + Back slit

HILDA + BRENDA



DOREEN

- + Length size 42: 108,5 cm

MATERIAL: 100% cotton
215 g/m²





ANNA
2593200-001
white

**ANNA
LADIES' COAT**
with stand-up collar

SIZES: 34 - 60

- + Length size 42: 105 cm
- + Hidden snap fastener placket
- + 1 chest pocket
- + 2 side pockets
- + Half back belt

**LADIES' COAT
ANNET - long sleeved
AGNES - short sleeved**

SIZES: XS - 2XL

- + Length size L: 105 cm
- + Stand-up collar
- + Hidden snap fastener placket
- + 1 chest pocket with pen compartment + attachment for identity badge
- + 2 side pockets, right with phone pocket
- + 1 sleeve pocket (pen pocket)
- + Back belt
- + Back slit



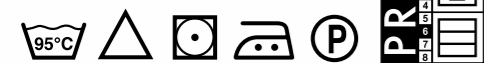
ANNET
B3846326-001
white

AGNES
B3854326-001
white

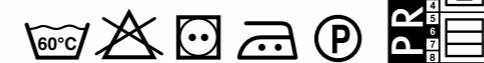
MATERIAL: 65% polyester
35% cotton
215 g/m²

MATERIAL: 65% polyester
35% cotton
215 g/m²

CARE:



CARE:





**MEN'S COAT
HELMUT**

with stand-up collar
and back belt

BREGT + DEVON
with lapel collar

SIZES: 44 - 66
90 - 114

- + Back belt
- + Hidden snap fastener placket
- + 1 chest pocket
- + 2 side pockets
- + Back slit



**BREGT 4365-001
DEVON 4367-001**
white

HELMUT + BREGT

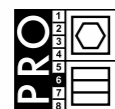


HELMUT + BREGT

+ Length size 52: 111 cm

MATERIAL: 65% polyester
35% cotton
215 g/m²

CARE:



DEVON

+ Length size 52: 114,5 cm

MATERIAL: 100% cotton
215 g/m²

CARE:



NARVIK B1249 426-001
white

HAMAR B1248 426-001
white

MEN'S COAT

NARVIK - short sleeved
HAMAR - long sleeved
with stand-up collar

+ Length size L: 114,5 cm
SIZES: XS - 2XL

CARL - long sleeved
with lapel collar

+ Length size 52: 110,5 cm
SIZES: 44 - 64

- + Hidden snap fastener placket
- + 1 chest pocket
- + 2 side pockets
- + Back belt
- + Back slit



CARL B1233 426-001
white

MATERIAL: 65% polyester
35% cotton
215 g/m²

CARE:





OSLO
B1250 426-001
white

**OSLO
MEN'S COAT**
short sleeved
with stand-up collar

SIZES: XS - 2XL

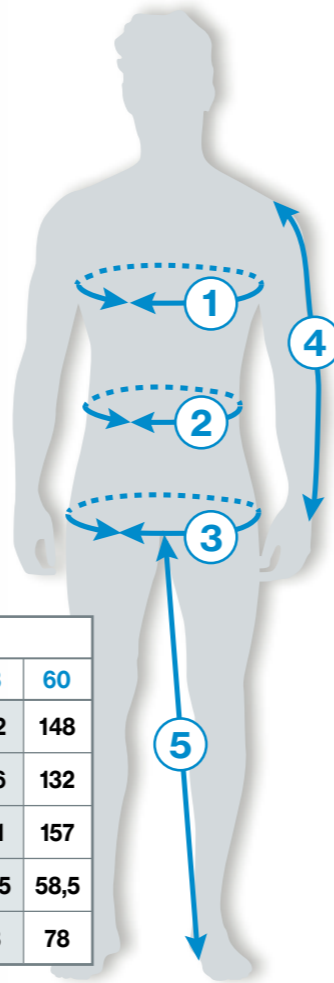
- + Length size L: 101 cm
- + Hidden snap fastener placket
- + 2 chest pockets
- + 2 side pockets
- + Back belt

MATERIAL: 65% polyester
35% cotton
215 g/m²

CARE:



Measures in cm



	LADIES	Sizes													
		34	36	38	40	42	44	46	48	50	52	54	56	58	60
①	Chest	80	84	88	92	96	100	106	112	118	124	130	136	142	148
②	Waist	64	68	72	76	80	84	90	96	102	108	114	120	126	132
③	Hip	89	93	97	101	105	109	115	121	127	133	139	145	151	157
④	Sleeve length	58,5	58,5	58,5	58,5	58,5	58,5	58,5	58,5	58,5	58,5	58,5	58,5	58,5	58,5
⑤	Inside leg	78	78	78	78	78	78	78	78	78	78	78	78	78	78

	MEN	Sizes															
		XS		S		M		L		XL		2XL		3XL		4XL	
		40	42	44	46	48	50	52	54	56	58	60	62	64	66	68	70
①	Chest	80	84	88	92	96	100	104	108	112	116	120	124	128	132	136	140
②	Waist	68	72	76	80	84	88	92	96	100	106	112	118	124	130	136	142
③	Hip	88	92	96	100	104	108	112	116	120	124	128	132	136	140	144	148
④	Sleeve length	59	61	62	63	64	65	66	67	68	69	70	71	72	73	74	75
⑤	Inside leg	72	74	76	77	78	79	80	81	82	83	84	84	84	84	84	84
	LONG SIZES	XS-L		S-L		M-L		L-L		XL-L							
		82	86	90	94	98	102	106	110	114	118						
		41	43	45	47	49	51	53	55	57	59						
④	Sleeve length	63	65	66	67	68	69	70	71	72	73						
⑤	Inside leg	76	78	80	81	82	83	84	85	86	87						
	SHORT SIZES	XS-K		S-K		M-K		L-K		XL-K		2XL-K		3XL-K			
		20	21	22	23	24	25	26	27	28	29	30	31	32	33		
④	Sleeve length	57	59	60	61	62	63	64	65	66	67	68	69	70	71		
⑤	Inside leg	67	69	71	72	73	74	75	76	77	78	79	79	79	79		

Measurements
① - ③
the same as normal sizes

Size conversion table

MEN	XS		S		M		L		XL		2XL		3XL		4XL		
	40	42	44	46	48	50	52	54	56	58	60	62	64	66	68	70	
LADIES	34	36	38	40	42	44	46	48	50	52	54	56	58				

SIZES + MEASURES





deberkel[®]
finest professional clothing

De Berkel B.V.
Gesinkkampstraat 13
7051 HR VARSSEVELD
NETHERLANDS
Tel.: +31 315 244161
E-Mail: info@deberkel.nl
Web: www.deberkel.nl

teamdress[®]
high performance workwear

teamdress Stein
Deutschland GmbH
Brandstücken 27
22549 HAMBURG
GERMANY
Tel.: +49 40 800905-01
E-Mail: info@teamdress.de
Web: www.teamdress.de