

Our  
future  
matters

teamdress®



ecoRover   
by teamdress®

Focus on sustainability with

**ecoRover** 



**Our  
future  
matters**

teamdress®



All the information about sustainability with the ecoRover collection can be found at:  
[www.ecorover-workwear.com](http://www.ecorover-workwear.com)

### High quality / robustness



- + High quality and the associated durability provide the greatest contribution to resource conservation
- + Suitable for industrial laundry in accordance with EN ISO 15797

### We carry products with the seal "Grüner Knopf" [Green Button]



- + The first workwear collection suitable for industrial laundry on the market with the "Grüner Knopf"
- + All the information about the "Grüner Knopf" can be found at [www.gruener-knopf.de](http://www.gruener-knopf.de)

### 65% recycled polyester

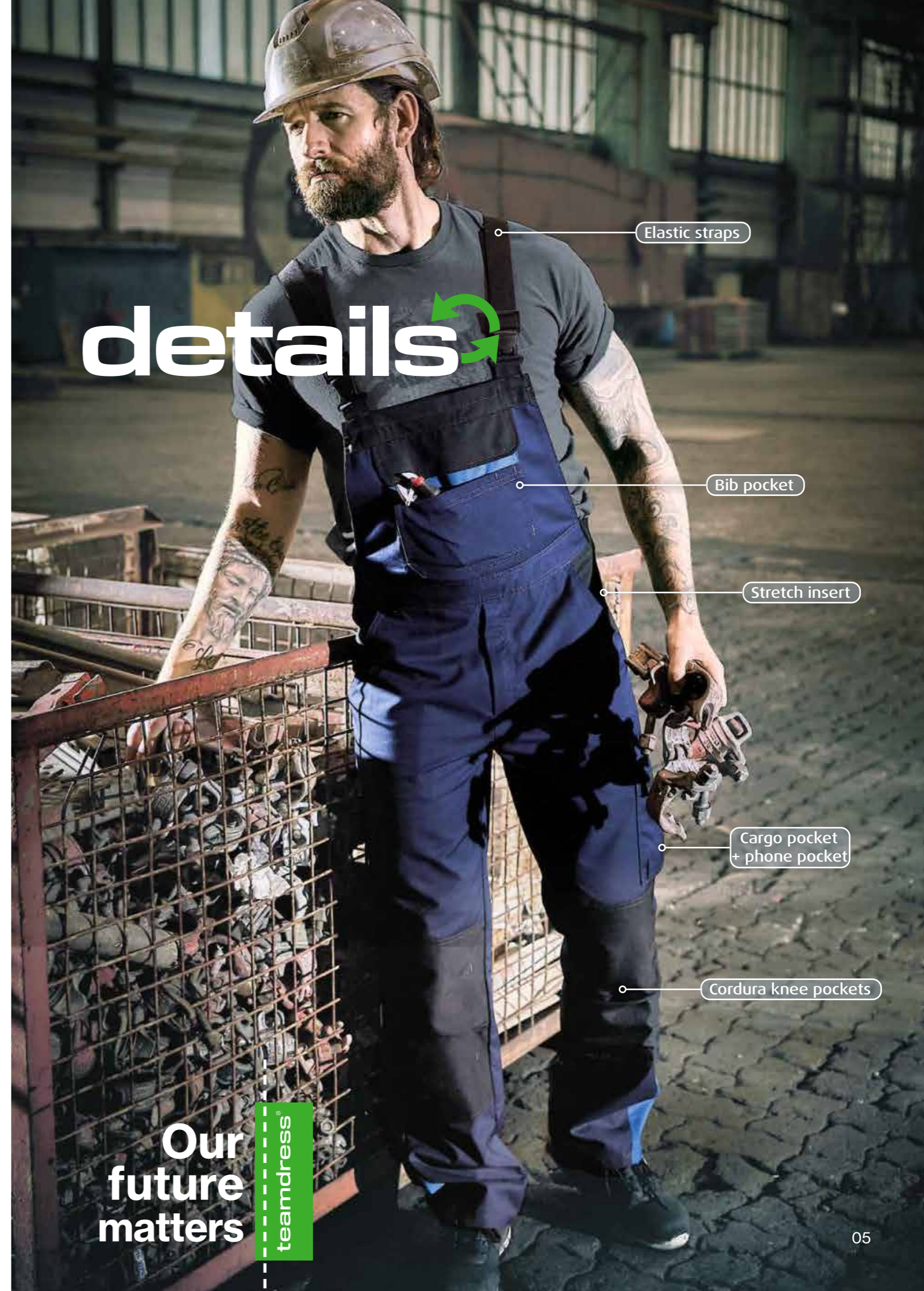


- + 50% energy saving by avoiding new polyester
- + Identical qualities as new polyester
- + Approx. 30 PET bottles are recycled for one work jacket

### 35% cotton (Supporting Fairtrade cotton)



- + FAIRTRADE cotton raw material model
- + Because farmers can sell larger quantities of their cotton through the Fairtrade raw material model for cotton, they are offered fairer trading conditions as well as new ways to bring about social change and greater environmental protection. Find out more at [www.info.fairtrade.net/sourcing](http://www.info.fairtrade.net/sourcing)



# details

Elastic straps

Bib pocket

Stretch insert

Cargo pocket + phone pocket

Cordura knee pockets

## Our future matters

teamdress

Quality,  
design  
and comfort  
meets  
sustainability

Reflective piping

Chest pocket with flap and hidden snap fasteners

Zip and snap fasteners

Hip pocket

Cargo pocket + phone pocket

Folding ruler pocket

# details

Our  
future  
matters

teamdress®



- + Stretch inserts in the back of the shoulder area of the work jacket for unrestricted freedom of movement
- + Integrated reflective piping for greater visibility during dusk and night



- + Hidden snap fasteners to avoid scratches



**green** 

**Forests are the lungs  
of the Earth**



Item 3508 not certified

**WORK JACKET**



3500-605

Sizes: 44 - 66, 94 - 114

**GILET**



3503-605

Sizes: 44 - 66

**WORK TROUSERS**



3501-605

Sizes: 44 - 66, 94 - 114, 23 - 30

**DUNGAREES**



3502-605

Sizes: 44 - 66, 94 - 114, 23 - 30

**SHORTS**



3504-605

Sizes: 44 - 66

**SOFT SHELL JACKET**



3508-125

Sizes: XS - 3XL



Workwear fabric:  
65% polyester, 35% cotton, 245 g/m<sup>2</sup>  
Polyester made from recycled PET bottles



Soft shell jacket fabric:  
100% polyester, 240 g/m<sup>2</sup>



**blue** 

**The sky's your limit**



Item 3508 not certified

**WORK JACKET**



3500-939

Sizes: 44 - 66, 94 - 114

**GILET**



3503-939

Sizes: 44 - 66

**WORK TROUSERS**



3501-939

Sizes: 44 - 66, 94 - 114, 23 - 30

**DUNGAREES**



3502-939

Sizes: 44 - 66, 94 - 114, 23 - 30

**SHORTS**



3504-939

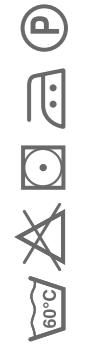
Sizes: 44 - 66

**SOFT SHELL JACKET**



3508-921

Sizes: XS - 3XL



Workwear fabric:  
65% polyester, 35% cotton, 245 g/m<sup>2</sup>  
Polyester made from recycled PET bottles



Soft shell jacket fabric:  
100% polyester, 240 g/m<sup>2</sup>





**red**

**New avenues open  
new doors**



Item 3508 not certified

**WORK JACKET**



3500-597

Sizes: 44 - 66, 94 - 114

**GILET**



3503-597

Sizes: 44 - 66

**WORK TROUSERS**



3501-597

Sizes: 44 - 66, 94 - 114, 23 - 30

**DUNGAREES**



3502-597

Sizes: 44 - 66, 94 - 114, 23 - 30

**SHORTS**



3504-597

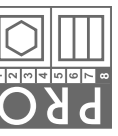
Sizes: 44 - 66

**SOFT SHELL JACKET**



3508-243

Sizes: XS - 3XL



Workwear fabric:  
65% polyester, 35% cotton, 245 g/m<sup>2</sup>  
Polyester made from recycled PET bottles



Soft shell jacket fabric:  
100% polyester, 240 g/m<sup>2</sup>



**black**

**If you can start  
the ball rolling  
you'll change  
the world**



Item 3508 not certified

**WORK JACKET**



**3500-988**

Sizes: 44 - 66, 94 - 114

**GILET**



**3503-988**

Sizes: 44 - 66

**WORK TROUSERS**



**3501-988**

Sizes: 44 - 66, 94 - 114, 23 - 30

**DUNGAREES**



**3502-988**

Sizes: 44 - 66, 94 - 114, 23 - 30

**SHORTS**



**3504-988**

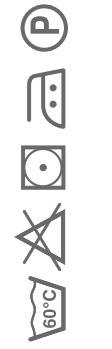
Sizes: 44 - 66

**SOFT SHELL JACKET**



**3508-988**

Sizes: XS - 3XL



Workwear fabric:  
65% polyester, 35% cotton, 245 g/m<sup>2</sup>  
Polyester made from recycled PET bottles



Soft shell jacket fabric:  
100% polyester, 240 g/m<sup>2</sup>





**GRÜNER KNOPF**  
 SOZIAL. ÖKOLOGISCH. STAATLICH.  
 UNABHÄNGIG ZERTIFIZIERT.

**LADIES' WORK JACKET**



3505-605

3505-939

3505-597

3505-988

Ladies' sizes: 34 - 56

**LADIES' WORK TROUSERS**



3506-605

3506-939

3506-597

3506-988

Ladies' sizes: 34 - 56

**LADIES' SOFT SHELL JACKET**



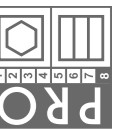
3509-125

3509-921

3509-243

3509-988

Ladies' sizes: XS - 2XL



Workwear fabric:  
 65% polyester, 35% cotton, 245 g/m<sup>2</sup>  
 Polyester made from recycled PET bottles



Soft shell jacket fabric:  
 100% polyester, 240 g/m<sup>2</sup>

# Work jacket

## Men 3500 – Ladies 3505

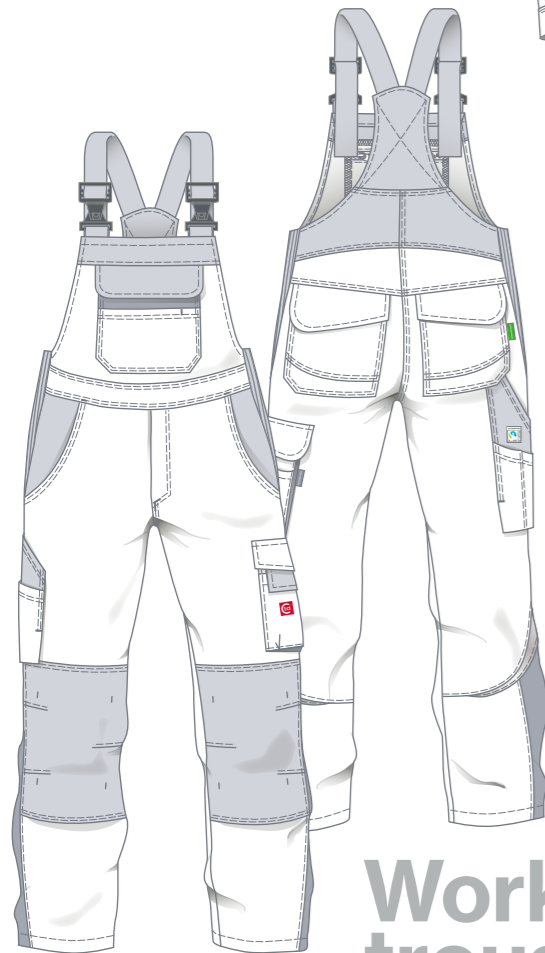
- + Stand-up collar
- + Front has zip and snap fasteners
- + 2 chest pockets with flap and hidden snap fasteners
- + 2 side pockets
- + 1 sleeve pocket with pen compartment
- + 1 inner chest pocket with snap fastener
- + Cuffs with snap fastener
- + Back stretch insert to assist with freedom of movement and ventilation
- + Extended back waistband with tabs and hidden snap fasteners
- + Reflective piping on the front and back yokes and sleeves



# Dungarees

## Men 3502

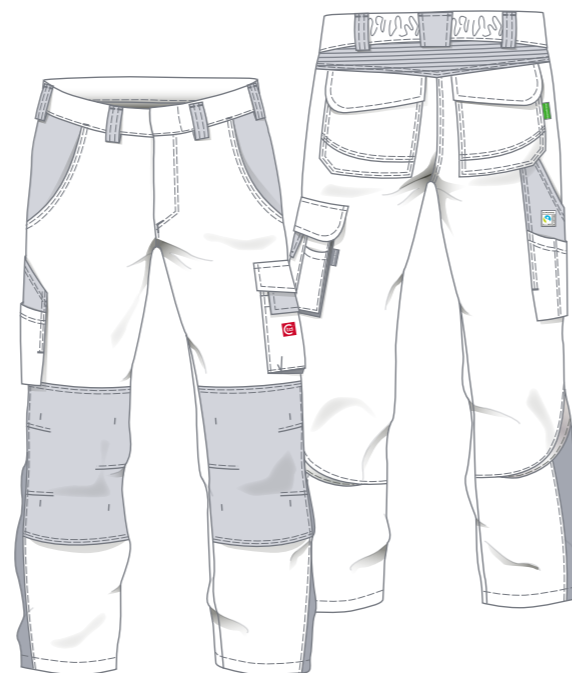
- + Adjustable elastic straps with front release buckles
- + High bib back
- + 1 bib pocket with flap and hidden snap fasteners + attached pocket with pen holder
- + 1 inner bib pocket with zip
- + 2 side pockets
- + 2 hip pockets with flap and hidden snap fasteners
- + 1 ruler pocket + attached pocket, divided
- + 1 cargo pocket (bellow pocket) with flap and hidden snap fasteners + phone pocket (bellow pocket) with velcro tab
- + Lateral stretch inserts
- + Zip fly
- + Knee pockets made out of Cordura with velcro
- + Reflective insert on back of trouser legs



# Work trousers

## Men 3501 – Ladies 3506

- + 7 wide belt loops
- + Waistband with hidden jeans button
- + Back yoke made from stretch material
- + Elasticated back waistband
- + 2 side pockets
- + 2 hip pockets with flap and hidden snap fasteners
- + 1 ruler pocket + attached pocket, divided
- + 1 cargo pocket (bellow pocket) with flap and hidden snap fasteners + phone pocket with velcro tab + small tool pocket
- + Zip fly
- + Knee pockets made out of Cordura with velcro
- + Reflective insert on back of trouser legs



# Shorts

## Men 3504

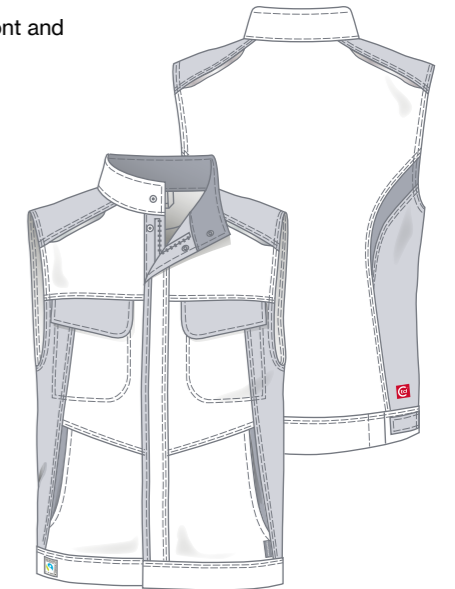
- + 7 wide belt loops
- + Waistband with hidden jeans button
- + Back yoke made from stretch material
- + Elasticated back waistband
- + 2 side pockets
- + 2 hip pockets with flap and hidden snap fasteners
- + 1 ruler pocket + attached pocket, divided
- + 1 cargo pocket (bellow pocket) with flap and hidden snap fasteners + phone pocket with velcro tab + small tool pocket
- + Zip fly



# Gilet

## Men 3503

- + Stand-up collar
- + Front has zip and snap fasteners
- + 2 chest pockets with flap and hidden snap fasteners
- + 2 side pockets
- + 1 inner chest pocket with snap fastener
- + Extended back waistband with tabs and hidden snap fasteners
- + Reflective piping on the front and back yokes



ecoRover

# Softshell jacket

## Men 3508 – Ladies 3509

- + Stand-up collar
- + Front with zip
- + 1 chest pocket with zip
- + 2 side pockets with zip
- + 2 inner side pockets, left: + pocket with zip
- + Sleeve hem with elasticated band
- + Reflective piping at front and back yoke and sleeves



# measure

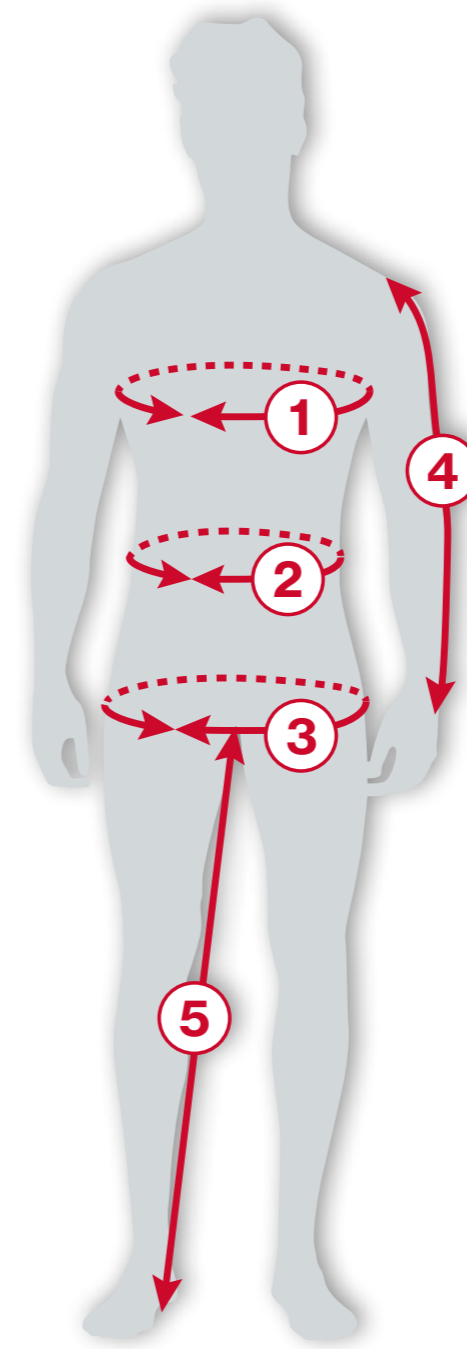
## MEASURES IN CM

	LADIES	Sizes													
		34	36	38	40	42	44	46	48	50	52	54	56	58	60
1	Chest	80	84	88	92	96	100	106	112	118	124	130	136	142	148
2	Waist	64	68	72	76	80	84	90	96	102	108	114	120	126	132
3	Hip	89	93	97	101	105	109	115	121	127	133	139	145	151	157
4	Sleeve length	58,5	58,5	58,5	58,5	58,5	58,5	58,5	58,5	58,5	58,5	58,5	58,5	58,5	58,5
5	Inside leg	78	78	78	78	78	78	78	78	78	78	78	78	78	78

	MEN	Sizes															
		XS		S		M		L		XL		2XL		3XL		4XL	
		40	42	44	46	48	50	52	54	56	58	60	62	64	66	68	70
1	Chest	80	84	88	92	96	100	104	108	112	116	120	124	128	132	136	140
2	Waist	68	72	76	80	84	88	92	96	100	106	112	118	124	130	136	142
3	Hip	88	92	96	100	104	108	112	116	120	124	128	132	136	140	144	148
4	Sleeve length	59	61	62	63	64	65	66	67	68	69	70	71	72	73	74	75
5	Inside leg	72	74	76	77	78	79	80	81	82	83	84	84	84	84	84	84
	LONG SIZES	XS-L		S-L		M-L		L-L		XL-L							
		82	86	90	94	98	102	106	110	114	118						
4	Sleeve length	63	65	66	67	68	69	70	71	72	73						
5	Inside leg	76	78	80	81	82	83	84	85	86	87						
	SHORT SIZES	XS-K		S-K		M-K		L-K		XL-K		2XL-K		3XL-K			
		20	21	22	23	24	25	26	27	28	29	30	31	32	33		
4	Sleeve length	57	59	60	61	62	63	64	65	66	67	68	69	70	71		
5	Inside leg	67	69	71	72	73	74	75	76	77	78	79	79	79	79		

Measurements 1-3  
 the same as normal sizes

		Size conversion table															
	MEN	XS		S		M		L		XL		2XL		3XL		4XL	
		40	42	44	46	48	50	52	54	56	58	60	62	64	66	68	70
	LADIES	34	36	38	40	42	44	46	48	50	52	54	56	58			







**ecoRover** 

[www.ecorover-workwear.com](http://www.ecorover-workwear.com)

**teamdress**<sup>®</sup>

Stein Deutschland GmbH  
Brandstücken 27  
22549 Hamburg  
Germany

Phone: +49 40 800905-01

Fax: +49 40 800905-21

eMail: [info@teamdress.de](mailto:info@teamdress.de)

Web: [www.teamdress.de](http://www.teamdress.de)